

BELZONA REPAIRS CYCLONE INLET

ID: 1171

Industry: Pulp & Paper

Application: SHM-Solids Handling Machinery

Customer Location: Paper Mill, Michigan U.S.A.

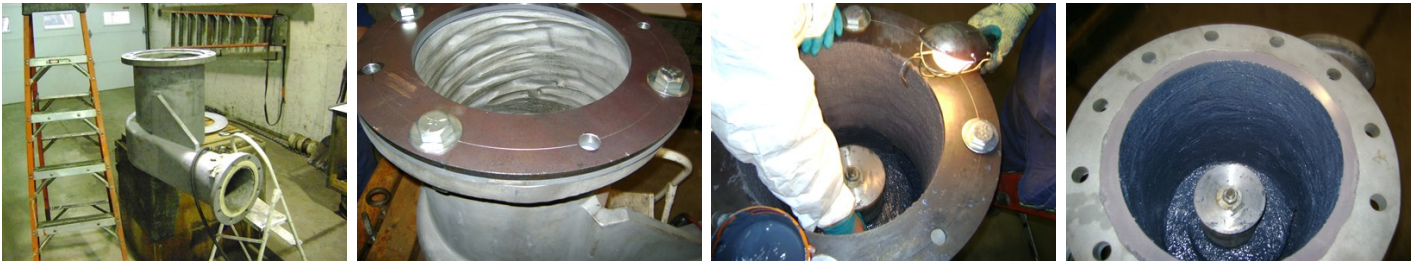
Application Date: October 2008

Substrate: Cast Iron

Products: Belzona® 1812 (Ceramic Carbide FP)<div>Belzona® 1321 (Ceramic S Metal)</div>

Problem

The inlet to the pulp cyclone showed severe erosion corrosion after only 8 months of service. It had already been patched once and had holed through again.



Photograph Descriptions

* The fitting in the repair area , * Flange form installed. Internal damage evident , * Belzona® 1321 being applied over the Belzona® 1812 , * Completed repair ,

Application Situation

The pulp cyclone removes scrap metal, stones, glass and other heavy abrasive debris from the pulp prior to screening.

Application Method

Application carried out in accordance with Belzona Know-How System Leaflet SHM-11.

A polycarbonate flange form was bolted on the casting and Belzona® 1812 applied to fill the eroded shell and rebuild the damaged flange area. The interior was coated with Belzona® 1321 to provide a smooth the surface and the flange form was removed.

Belzona Facts

A replacement fitting was quoted at \$25,000 and six weeks delivery. The Belzona material used in this repair cost less than \$2,000. When the fitting currently in use is replaced by this fitting, it too will be repaired with Belzona abrasion resistant lining. The mill thus has a low cost durable back-up part ready for service.

For more examples of Belzona Know - How In Action, please visit <https://khia.belzona.com>

ISO 9001:2015

FS 695214

ISO 14001:2015

EMS 695213

Belzona products are
manufactured under an ISO
9000 Registered Quality
Management System.

www.belzona.com


BELZONA®
Repair • Protect • Improve

Copyright © Belzona International Limited 2024