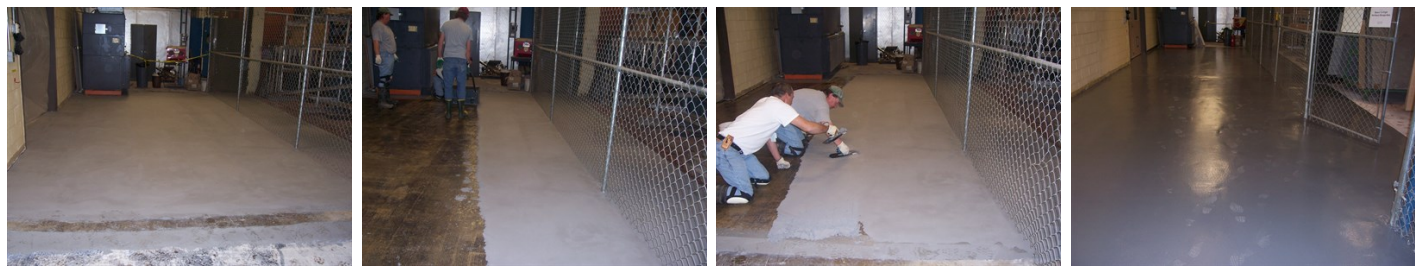


NASA GOES WITH BELZONA

ID: 1189

Industry:	Buildings & Structures	Customer Location:	NASA, Alabama USA
Application:	FPA-Floor Problem Areas	Application Date:	2003
Substrate:	Concrete		
Products:	<div>Belzona® 4131 (Magma Screed)</div><div>Belzona® 5231 (SG Laminate)</div>		

Problem
Old coating and repair materials were spalling and causing uneven areas of the floor. Fork trucks and equipment being moved across it was being damaged.



Photograph Descriptions

* Overall view of the floor after preparation by Blastrack , * Screed box laying out the Belzona® 4131 , * Smoothing out the Belzona® 4131 , * Final coats of Belzona® 5231 ,

Application Situation

Machine shop floor was uneven.

Application Method

Application was carried out in accordance with Belzona Know-How System Leaflet FPA-1. A screed box was used to apply 1/4 inch of Belzona® 4131. After the floor was leveled out Belzona® 5231 was applied in two coats.

Belzona Facts

Old coating had failed within 1 year. Belzona has been down 3 years without any issues providing an aesthetic non-slip surface.

For more examples of Belzona Know - How In Action, please visit <https://khia.belzona.com>

ISO 9001:2015
FS 695214
ISO 14001:2015
EMS 695213

Belzona products are
manufactured under an ISO
9000 Registered Quality
Management System.

www.belzona.com

