

BELZONA REPAIRS PARKING DECK EXPANSION JOINTS

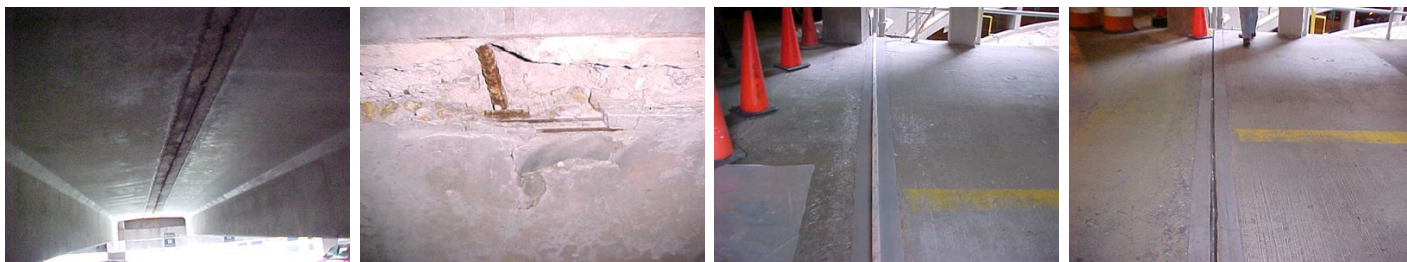
ID: 1197

Industry: Buildings & Structures
Application: FPA-Floor Problem Areas
Substrate: Concrete
Products: <div>Belzona® 4111 (Magma Quartz)</div><div>Belzona® 4911 (Magma TX Conditioner)</div>

Customer Location: International Airport, Alabama USA
Application Date: 2000

Problem

Sealant was failing and the concrete was deteriorated on each side of the joint on various levels of the parking deck.
Fabricated expansion joints to be installed due to extreme movement.



Photograph Descriptions

* View of expansion joint from the floor below , * Spalled concrete due to water penetration and corrosion of rebar , * Forming the Belzona® 4111 using a 2" x 4" batten , * Repair after the expansion joint was installed ,

Application Situation

Expansion joints in car park decks

Application Method

Application was carried out in accordance with Belzona Know-How System Leaflet FPA-5. Joint nosings were rebuilt with Belzona® 4111 prior to bonding prefabricated expansion joints in with Belzona® 4911.

Belzona Facts

Belzona® 4111 was used to repair the concrete due to the quick cure times. Belzona was also used due to superior adhesion in bonding the fabricated expansion joint. Repair has been excellent since 2000.

For more examples of Belzona Know - How In Action, please visit <https://khia.belzona.com>

ISO 9001:2015
FS 695214
ISO 14001:2015
EMS 695213

Belzona products are
manufactured under an ISO
9000 Registered Quality
Management System.

www.belzona.com


BELZONA®
Repair • Protect • Improve

Copyright © Belzona International Limited 2024