

BELZONA GIVES SUPPORT TO NEW RAILS OF 10 TON PRESS

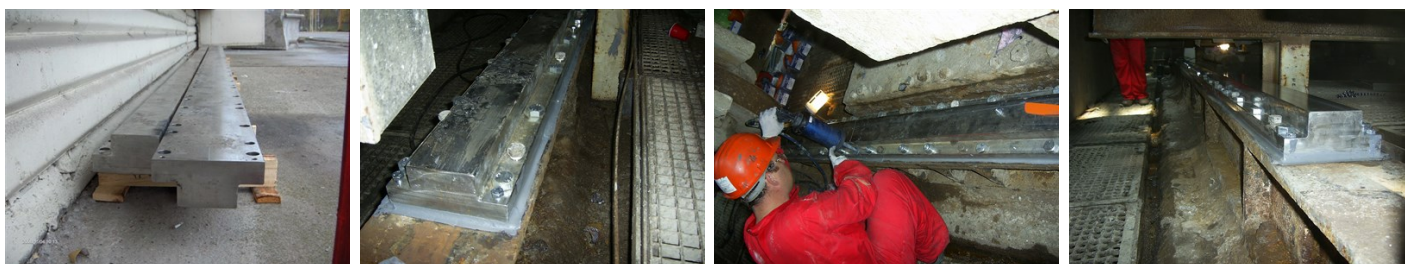
ID: 1303

Industry: General Industry
Application: GSS-Gaskets, Seals and Shims
Substrate: Stainless Steel and Carbon Steel
Products: * Belzona® 1111 (Super Metal) ,
* Belzona® 1321 (Ceramic S-Metal) ,

Customer Location: Producer of drywall systems, Bulgaria
Application Date: August, 2009

Problem

Irregularities in underlying steel base gave requirement for an irregular shim of between 2 & 10mm for new steel support rail for the press.



Photograph Descriptions

- * View of new stainless steel rails. ,
- * After surface preparation and dry fit assembly Belzona® 1111 applied to seal around rail perimeter ,
- * Creating irregular shim by injection of Belzona® 1321 ,
- * Completed repair and press ready to be lowered into position ,

Application Situation

7 metre long support rails for 10 ton press in Drywall panel production plant

Application Method

Application was carried out in accordance with Belzona Know-How System Leaflet GSS-9.

Belzona Facts

Belzona provides a high-strength irregular shim to support the rails. Belzona Consultant was able to provide instructions on how to apply products on site to ensure complete filling of gaps in the range from 2 to 10 mm between new rails and steel base.

For more examples of Belzona Know - How In Action, please visit <https://khia.belzona.com>

ISO 9001:2015
FS 695214
ISO 14001:2015
EMS 695213

Belzona products are
manufactured under an ISO
9000 Registered Quality
Management System.

www.belzona.com


BELZONA®
Repair • Protect • Improve