

BOW THRUSTER REPAIR WITH BELZONA

ID: 1423

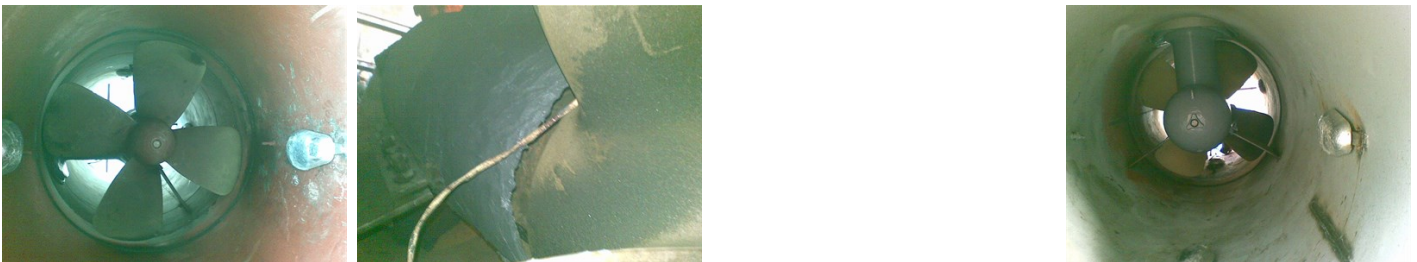
Industry: *Marine*
Application: *SOS-Ships and Offshore Structures*

Customer Location: *Dockyard, Bulgaria*
Application Date: *November, 2009*

Substrate: *Cast iron*
Products: ** Belzona® 1311 (Ceramic R-Metal) ,*
** Belzona® 1321 (Ceramic S-Metal) ,*

Problem

Erosion/corrosion effects made severe pitting damage to the whole bow thruster and supporting pillar due to bad cathodic protection.



Photograph Descriptions

- * General view of bow thruster ,
- * Belzona® 1311 used to rebuild damaged surface and restore profile ,
- * First coat of Belzona® 1321 applied ,
- * Second coat of Belzona® 1321 applied to complete application ,

Application Situation

Bow thruster of cargo vessel

Application Method

Application was carried out in accordance with Belzona Know-How System Leaflets SOS-1 and 2.

Belzona Facts

Replacement of the badly eroded bow thruster body was planned for the next dry-dock but immediate replacement was not an option due to delivery time constraints. Belzona was chosen for its durable, fast and inexpensive application. The whole repair was done within a 48 hour period, restoring an even surface profile with additional protective coating for long erosion/corrosion resistance.

For more examples of Belzona Know - How In Action, please visit <https://khia.belzona.com>

ISO 9001:2015
FS 695214
ISO 14001:2015
EMS 695213

Belzona products are
manufactured under an ISO
9000 Registered Quality
Management System.

www.belzona.com

**BELZONA**
Repair • Protect • Improve

For more examples of Belzona Know - How In Action, please visit <https://khia.belzona.com>

ISO 9001:2015
FS 695214
ISO 14001:2015
EMS 695213

Belzona products are
manufactured under an ISO
9000 Registered Quality
Management System.

www.belzona.com

