

ROUTINE BELZONA PUMP APPLICATION

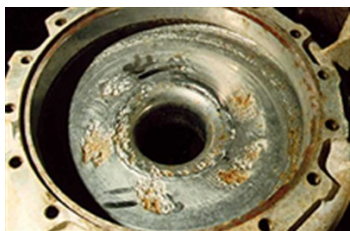
ID: 143

Industry: *General Industry*
Application: *CEP-Centrifugal Pumps*
Substrate: *Other*
Products: *Belzona® 1311 (Ceramic R-Metal),*
Belzona® 1321 (Ceramic S-Metal),

Customer Location: *China Clay Producer*
Application Date: *Ongoing since 1970*

Problem

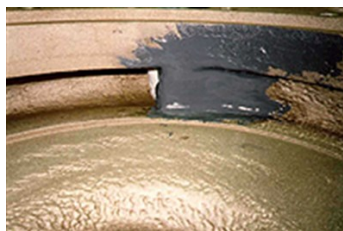
Severe erosion of the pump casing and back plates



Typical casing showing the general erosion damage



Belzona® 1311 being applied into the rebate at the extremity of the repair



Rebuild of badly eroded cutwater using an Elastomer former to obtain correct profiles



The finished casing ready for re-assembly

Application Situation

SALA Pumps used in the drying plant to transport the clay slurry

Application Method

The application is carried out in accordance with Belzona Know-How leaflets CEP-1 and CEP-5.

Belzona Facts

The pump back plates are rebuilt in a similar manner. The repairs last a little longer than a new part but saves between 80-90% the cost of a new component. The pumps have been rebuilt on average more than 6 times saving the need to buy in new and expensive pump components

For more examples of Belzona Know - How In Action, please visit <https://khia.belzona.com>

ISO 9001:2015
FS 695214
ISO 14001:2015
EMS 695213

Belzona products are
manufactured under an ISO
9000 Registered Quality
Management System.

www.belzona.com


BELZONA®
Repair • Protect • Improve