

BELZONA ENHANCES EFFICIENCY OF NEW PUMPS

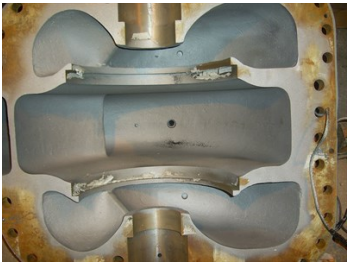
ID: 1479

Industry: Water / Wastewater
Application: CEP-Centrifugal Pumps
Substrate: Cast iron case and bronze impeller
Products: * Belzona® 1111 (Super Metal) ,
* Belzona® 1341 (Supermetalgilde) ,

Customer Location: Water supply company, Bulgaria
Application Date: February - April, 2010

Problem

Need of corrosion/erosion protection and increased pumping efficiency



Photograph Descriptions

- * Grit blasted casing ,
- * Preparation of rebate grooves ,
- * First coat of Belzona® 1341 applied ,
- * Finished application with second coat of Belzona® 1341 ,

Application Situation

New double end suction centrifugal Worthington pump

Application Method

Application procedures were carried out in accordance with Belzona Know-How System Leaflets CEP-3 and CEP-10.

Belzona Facts

As a result of applied Belzona efficiency enhancement coating a reduced power consumption of 35 kWh was registered and efficiency was increased to 3.5% at duty point. Two new pumps were coated with Belzona during this application period.

For more examples of Belzona Know - How In Action, please visit <https://khia.belzona.com>

ISO 9001:2015
FS 695214
ISO 14001:2015
EMS 695213

Belzona products are
manufactured under an ISO
9000 Registered Quality
Management System.

www.belzona.com

BELZONA
Repair • Protect • Improve