

BELZONA® REBUILT CUTWATER EDGE OF COOLING PUMP

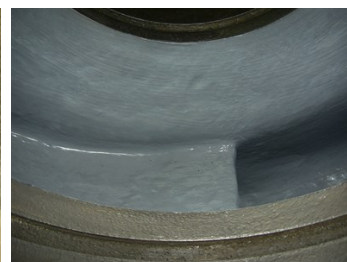
ID: 1481

Industry: Power
Application: CEP-Centrifugal Pumps
Substrate: Cast iron
Products: * Belzona 1311 (Ceramic R-Metal) ,
* Belzona 1321 (Ceramic S-Metal) ,

Customer Location: Nuclear Power Plant, Bulgaria
Application Date: May, 2010

Problem

Erosion and corrosion caused wear of cutwater edge and as a result reduced pump efficiency occurred



Photograph Descriptions

- * 1. Cutwater after grid blasting ,
- * 2. Preparation of cutwater framework for screwing steel mesh ,
- * 3. Cutwater profile restoration with Belzona 1311 in progress ,
- * 4. Completed application with two coats Belzona 1321 ,

Application Situation

Double Suction Centrifugal Cooling Pump

Application Method

Application procedures were carried out in accordance with Belzona Know-How System Leaflets CEP-1 and CEP-3.

Belzona Facts

Previous attempts were made by welding of cutwater edge but without success and additionally stress cracks were appeared. Belzona cold applied approach for pump cutwater rebuild saved both time and money over traditional repairs by welding and machining without secondary problems.

For more examples of Belzona Know - How In Action, please visit <https://khia.belzona.com>

ISO 9001:2015
FS 695214
ISO 14001:2015
EMS 695213

Belzona products are
manufactured under an ISO
9000 Registered Quality
Management System.

www.belzona.com


BELZONA®
Repair • Protect • Improve