

# BELZONA GUIDES GATE VALVE REPAIR

ID: 1601

Industry: Buildings & Structures

Customer Location: Timber handling quay on the Ruhr in North-Rhine Westphalia, Germany

Application: CEP-Centrifugal Pumps

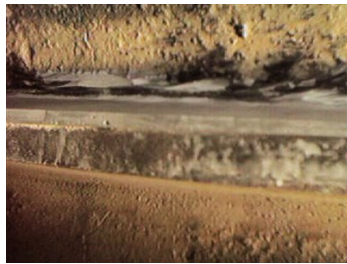
Application Date: June 1997

Substrate: Cast Iron

Products: \* Belzona® 1111 (Super Metal) ,

## Problem

On both of the trapezoidal guides in the body there was severe metal loss caused during operation of the gate. The material loss was on average 6-8mm, occasionally 10mm (0.4"), over a length of 1600mm (63")



## Photograph Descriptions

- \* Corrosion to the guides ,
- \* The completed application after forming ,
- \* Refitting the valve ,
- \* Finished repair ,

## Application Situation

1400mm (55") NB Gate Valve

## Application Method

The application was carried out in accordance with Belzona Know-How System Leaflet VPF-4. The guides were grit blasted to remove the corrosion. Moisture was driven out of the cast iron, followed by a second grit blasting. Using forming methods the guides were rebuilt, and then deburred prior to reassembly.

## Belzona Facts

Since this initial application was carried out a further two valves have been completed for the customer.

For more examples of Belzona Know - How In Action, please visit <https://khia.belzona.com>

ISO 9001:2015

Belzona products are

FS 695214

manufactured under an ISO

ISO 14001:2015

9000 Registered Quality

EMS 695213

Management System.

[www.belzona.com](http://www.belzona.com)

