

# BELZONA PROVIDES LONG TERM SOLUTION FOR FGD REACTORS

ID: 1608

Industry: Buildings & Structures

Application: CEP-Centrifugal Pumps

Substrate: Carbon Steel

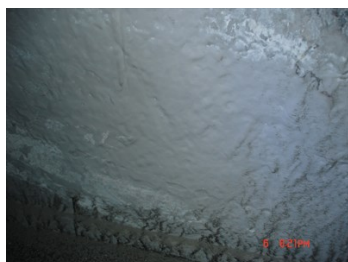
Products: \* Belzona® 5811 (Immersion Grade) ,  
\* Belzona® 5891 (HT Immersion Grade) ,

Customer Location: Power Plant, North Dakota

Application Date: 2000, 2001, 2006, 2007

## Problem

Reactor contains corrosive alkaline slurry of gypsum and lime. Coating required for corrosion protection.



## Photograph Descriptions

- \* Coating behind crust of slurry ,
- \* Coating from 2000 application ,
- \* Adhesion testing ,
- \* Adhesion testing ,

## Application Situation

Two large FGD reactors that are part of two wet FGD units in the great River energy power plant.

## Application Method

Application was carried out in accordance with Belzona Know-How System Leaflet TCC-5. Application was completed using airless spray equipment.

## Belzona Facts

The walls and floor were coated with Belzona® 5811. Due to higher temperatures ceiling and roof coated with Belzona® 5891. The applications have been carried out in stages over a 7 year period starting in 2000. Unit one was inspected in 2007 and found to be in excellent condition. Adhesion tests were performed on the walls of the reactor (oldest part of the coating) and found to exceed 1600 psi direct tension as per ASTM D4541.

For more examples of Belzona Know - How In Action, please visit <https://khia.belzona.com>

ISO 9001:2015

FS 695214

ISO 14001:2015

EMS 695213

Belzona products are  
manufactured under an ISO  
9000 Registered Quality  
Management System.

[www.belzona.com](http://www.belzona.com)

  
**BELZONA®**  
Repair • Protect • Improve