

BELZONA REPAIRS AND PROTECTS HOSPITAL TUNNEL

ID: 1635

Industry: Buildings & Structures

Customer Location: Hospital, UK

Application: FPA-Floor Problem Areas

Application Date: 2010

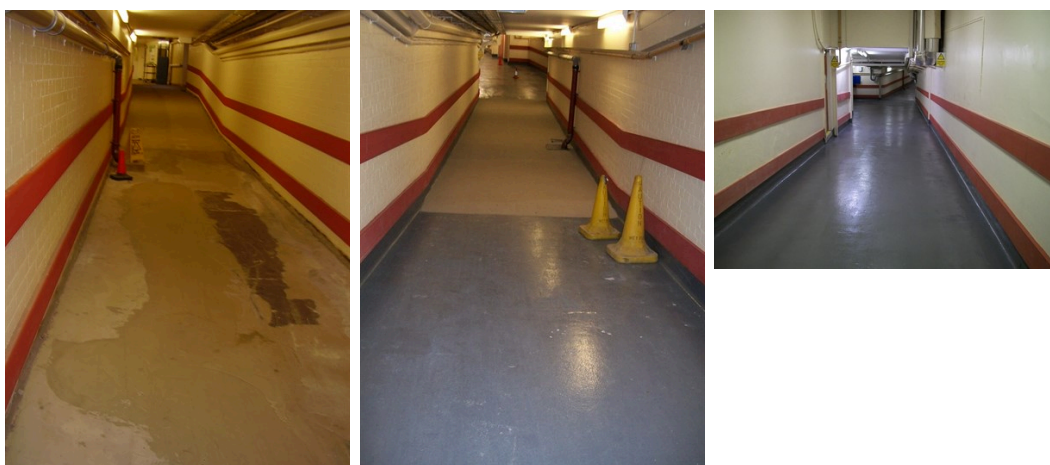
Substrate: Concrete

Products: * Belzona® 4131 (Magma Screed) ,

* Belzona® 5231 (SG Laminate) ,

Problem

Due to constant heavy traffic using the connecting tunnel between the two hospital wings, the floor had become worn and uneven. As this is the only direct route between the two parts of the Hospital, it was essential that it was open every day from 6am.



Photograph Descriptions

- * Damaged floor ,
- * Damaged floor with first coat of Belzona® 5231 ,
- * Completed application ,
- * ,

Application Situation

Damaged and uneven floor in connecting tunnel between two hospital wings.

Application Method

Application was carried out in accordance with Belzona Know-How System Leaflets FPA-1 & 8. Belzona® 4131 was first applied to resurface the damaged concrete. Following this, two coats of Belzona® 5231 (incorporating an additional 10% aggregate) were applied to provide protection to the surface together with positive grip.

For more examples of Belzona Know - How In Action, please visit <https://khia.belzona.com>

ISO 9001:2015

FS 695214

ISO 14001:2015

EMS 695213

Belzona products are
manufactured under an ISO
9000 Registered Quality
Management System.

www.belzona.com


BELZONA®
Repair • Protect • Improve

Belzona Facts

As the tunnel had to be open at 6am every morning, the contractor worked in the evening, to ensure that the product was cured and ready for the morning. The application took just three evenings to complete.

For more examples of Belzona Know - How In Action, please visit <https://khia.belzona.com>

ISO 9001:2015
FS 695214
ISO 14001:2015
EMS 695213

Belzona products are
manufactured under an ISO
9000 Registered Quality
Management System.

www.belzona.com

