

BELZONA HELPS KEEP THE FARMS FREE FROM FLOODING

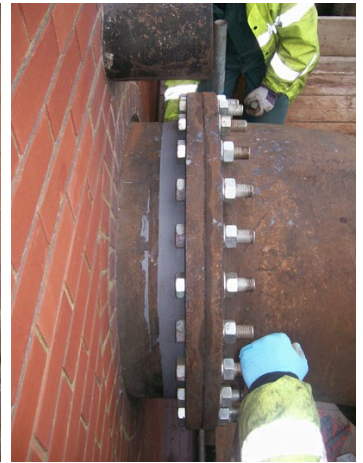
ID: 1641

Industry: Buildings & Structures
Application: CEP-Centrifugal Pumps
Substrate: Steel
Products: * Belzona[®] 1291 (ES Metal) Belzona[®] 1161 (Super UW Metal) ,

Customer Location: Water Authority, UK
Application Date: October 2008

Problem

Crack on one of the 900mm outlet pipes was jeopardising operation of the pump set. Due to the time of year and high risk of flooding it was deemed unacceptable to take the set offline and carry out a conventional repair.



Photograph Descriptions

- * General view of the pumping station with the 4 outlet pipes ,
- * The damaged pipe ,
- * Belzona[®] 1291 applied to stem leak ,
- * Pipe completely wrapped with Belzona 1161 ,

Application Situation

Pumping station used to regulate the water table in the surrounding low lying farmland. There are 4 pump sets that transfer water from the land into the nearby river to prevent flooding.

Application Method

Application was carried out in accordance with Belzona Know-How System Leaflet VPF-11a. After stemming leak with Belzona[®] 1291 a wrap was completed with the Belzona[®] 1161 incorporating Belzona[®] 9341 (Reinforcement tape)

For more examples of Belzona Know - How In Action, please visit <https://khia.belzona.com>

ISO 9001:2015
FS 695214
ISO 14001:2015
EMS 695213

Belzona products are
manufactured under an ISO
9000 Registered Quality
Management System.

www.belzona.com


BELZONA[®]
Repair • Protect • Improve

Belzona Facts

A weld repair had already been tried and failed. The Belzona repair allowed flood defences to continue until flood risk was lower and pipe could be dug out and replaced.

For more examples of Belzona Know - How In Action, please visit <https://khia.belzona.com>

ISO 9001:2015
FS 695214
ISO 14001:2015
EMS 695213

Belzona products are
manufactured under an ISO
9000 Registered Quality
Management System.

www.belzona.com

