

CHIMNEY SHINES WITH BELZONA PROTECTION

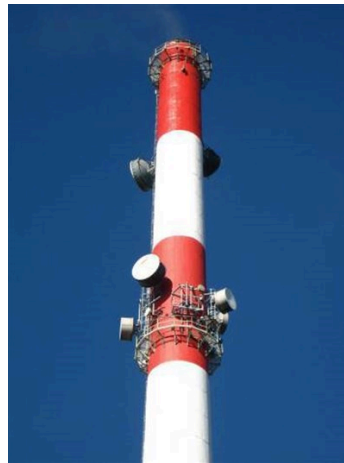
ID: 1717

Industry: Power
 Application: WPA-Wall Problem Areas
 Substrate: Concrete
 Products: * Belzona® 5111 (Ceramic Cladding),

Customer Location: Powerstation, Poland
 Application Date: September, 2008

Problem

The existing coating systems had reached the end of their life and broken down resulting in an unattractive and poorly protected chimney stack. The client undertook a comparison of Belzona with a competitor.



Photograph Descriptions

- * September 2008 pre works ,
- * Application underway via rope access ,
- * Completed application ,
- * The top two, shiny bands are Belzona® 5111 ,
- * Review in 2010 - note the top two bands are still shiny ,

Application Situation

120m high Powerstation chimney

Application Method

Application was carried out in accordance with a modified Belzona Know-How System Leaflet WPA-2. Rope Access Technicians were used in place of industrial scaffolding. The top two, most aggressively attacked bands were coated using Belzona® 5111 in red and white.

For more examples of Belzona Know - How In Action, please visit <https://khia.belzona.com>

ISO 9001:2015
 FS 695214
 ISO 14001:2015
 EMS 695213

Belzona products are
 manufactured under an ISO
 9000 Registered Quality
 Management System.

www.belzona.com


BELZONA
 Repair • Protect • Improve

Belzona Facts

After initial review it was noted that the Belzona® 5111 quite literally outshone the competition. Aside from the chemical and UV resistance needed for the application, the smooth surface of Belzona® 5111 did not attract dirt and would "self clean" with rain.

For more examples of Belzona Know - How In Action, please visit <https://khia.belzona.com>

ISO 9001:2015
FS 695214
ISO 14001:2015
EMS 695213

Belzona products are
manufactured under an ISO
9000 Registered Quality
Management System.

www.belzona.com

