

# BELZONA REPAIR AND PROTECTION OF SEA WATER LIFT PUMPS

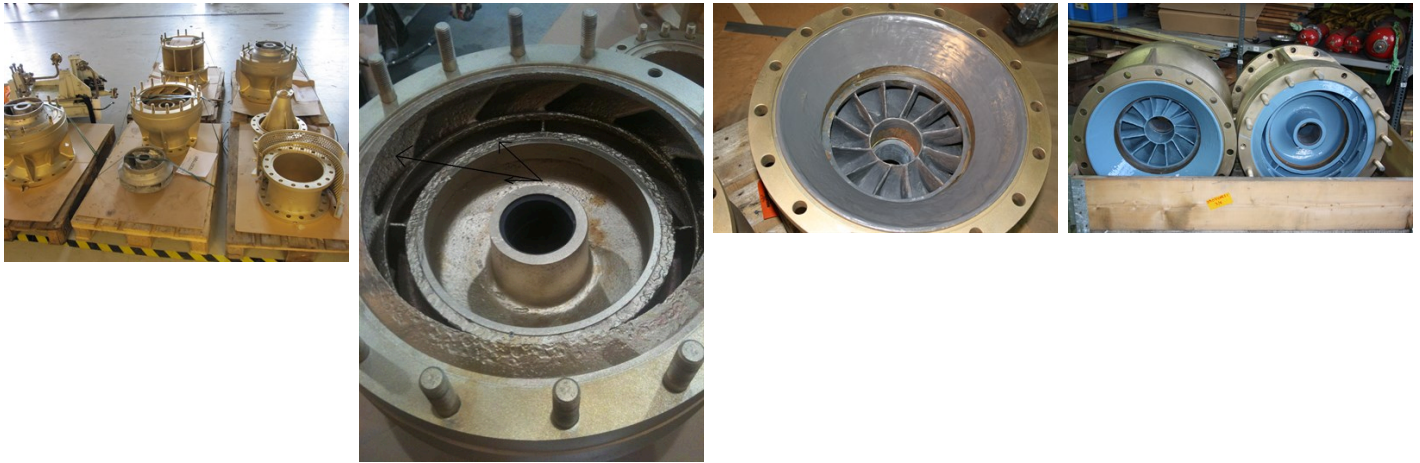
ID: 2257

**Industry:** General Industry  
**Application:** CEP-Centrifugal Pumps  
**Substrate:** Aluminium Bronze  
**Products:** \* Belzona 1311 (Ceramic R-Metal) ,  
\* Belzona 1341 (Supermetalglide) ,

**Customer Location:** Pump repair workshop, Norway  
**Application Date:** September 2010

## Problem

*Pumps and various assembly parts were suffering from erosion and corrosion.*



## Photograph Descriptions

- \* Application parts overview ,
- \* Close up of corroded surface ,
- \* Rebuilding with Belzona® 1311 ,
- \* Complete application with 2 coats of Belzona® 1341 ,

## Application Situation

Sea water lift pumps.

## Application Method

Application was carried out in accordance with Belzona Know-How System Leaflets CEP-3 & CEP-5.

## Belzona Facts

Rebuilding and coating of the equipment saved the customer both time and money as this equipment is both expensive and has a

For more examples of Belzona Know - How In Action, please visit <https://khia.belzona.com>

ISO 9001:2015  
Q 09335  
ISO 14001:2015  
EMS 509612

Belzona products are  
manufactured under an ISO  
9000 Registered Quality  
Management System.

[www.belzona.com](http://www.belzona.com)

  
**BELZONA**  
Repair • Protect • Improve

6-8 months delivery period. The pumps have been in service since the repair and are still functioning perfectly. 4 similar pumps has been repaired for this customer since the first application.

---

For more examples of Belzona Know - How In Action, please visit <https://khia.belzona.com>

ISO 9001:2015  
Q 09335  
ISO 14001:2015  
EMS 509612

Belzona products are  
manufactured under an ISO  
9000 Registered Quality  
Management System.

[www.belzona.com](http://www.belzona.com)

