

# BELZONA PROVIDES PROTECTION FOR VACUUM PUMP CONE

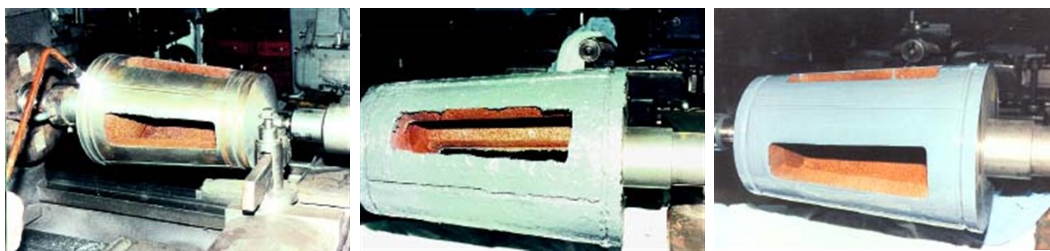
ID: 227

Industry: Sugar  
Application: CEP-Centrifugal Pumps  
Substrate: Steel  
Products: \* Belzona® 1111 (Super Metal) ,  
\* Belzona® 1341 (Supermetalgilde) ,

Customer Location: Sugar beet mill in Minnesota, U.S.A.  
Application Date: 1993

## Problem

*Erosion/corrosion damage can occur over the surface of a vacuum pump cone due to particle entrainment and chemical attack.*



## Photograph Descriptions

- \* Removal of any of the cone's surface contaminants is treated with a torch ,
- \* Use of Belzona® 1111 to rebuild irregularities ,
- \* Belzona® 1341 provides final erosion/corrosion protection ,

## Application Situation

Vacuum pump cone.

## Application Method

The application was carried out in accordance with a modified version of Belzona Know-How System Leaflet CEP-8.

## Belzona Facts

The machinability of the Belzona 1000 Series Metals like the Belzona® 1111 in this case ensures that the right taper is achieved on the cone, and that all imperfections are filled. The use of a coating system further reinforces the overall protection.

For more examples of Belzona Know - How In Action, please visit <https://khia.belzona.com>

ISO 9001:2015  
FS 695214  
ISO 14001:2015  
EMS 695213

Belzona products are  
manufactured under an ISO  
9000 Registered Quality  
Management System.

[www.belzona.com](http://www.belzona.com)

  
**BELZONA®**  
Repair • Protect • Improve