

BELZONA RENEWS OLD PUMPS

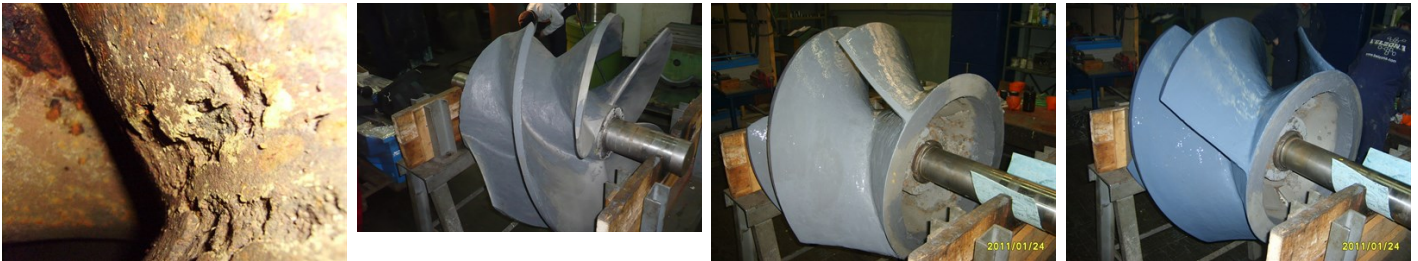
ID: 2461

Industry: Power
Application: CEP-Centrifugal Pumps
Substrate: Stainless steel
Products: * Belzona® 1311 (Ceramic R Metal) ,
* Belzona® 1321 (Ceramic S Metal) ,

Customer Location: Power Plant, Croatia
Application Date: 2011

Problem

When stripped down for inspection severe erosion damage on the impellers was found to be the cause of lost performance.



Photograph Descriptions

- * Up-close damage ,
- * Rebuilding of the impeller profile ,
- * Applying the first coat of Belzona® 1321 ,
- * Impeller completed with a second coat of Belzona® 1321 ,

Application Situation

4 cooling water pump impellers which had been in service for 15 years.

Application Method

Application was carried out in accordance with Belzona Know-How System Leaflets CEP-1 and CEP-3.

Belzona Facts

In 2007 the customer asked for renewal and protection of pump casings with Belzona® 1311 and Belzona® 1321. After 4 years in service the casings showed no significant wear. The customer was convinced of the quality of Belzona and ordered the renewal and protection of the impellers with the same Belzona system.

For more examples of Belzona Know - How In Action, please visit <https://khia.belzona.com>

ISO 9001:2015
FS 695214
ISO 14001:2015
EMS 695213

Belzona products are
manufactured under an ISO
9000 Registered Quality
Management System.

www.belzona.com

BELZONA
Repair • Protect • Improve