

BELZONA SAVES THIS BULL GEAR FOR A SECOND TIME

ID: 303

Industry: *General Industry*

Customer Location: *Heavy equipment company in Ontario, Canada*

Application: *MPT-Mechanical Power Transmission*

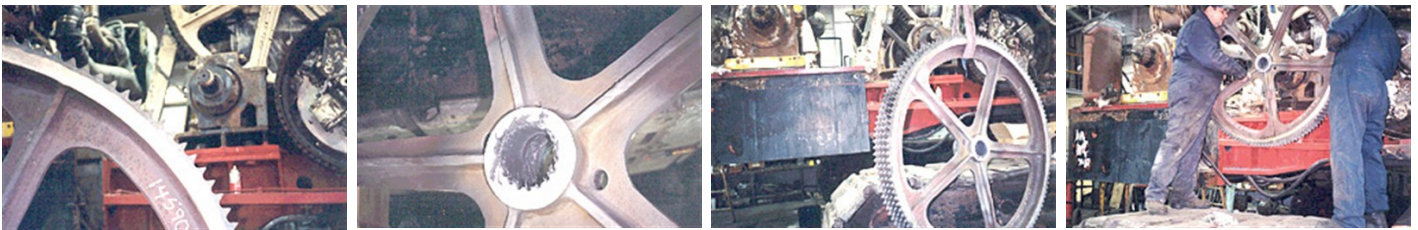
Application Date: *June 2001*

Substrate: *Steel*

Products: ** Belzona® 1311 (Ceramic R-Metal) ,*

Problem

12-years prior, the assembly was rebuilt with Belzona® 1111 (Super Metal) which needed refurbishment. Excess play in the spline made it difficult for precision movements.



Photograph Descriptions

- * Damage bull gear spline ,
- * Belzona® 1311 (Ceramic R-Metal) applied to socket ,
- * Lifting gear into position ,
- * Aligning bull gear onto spline ,

Application Situation

Bull gear and spline for 100-ton overhead crane.

Application Method

The application was carried out in accordance with Belzona Know-How System Leaflet MPT-5.

Belzona Facts

Both the male spline and the female socket of the bull gear were blasted. Belzona® 9411 (Release Agent) was applied to the spline and Belzona® 1311 (Ceramic R-Metal) was applied to both, subse-quentially mated, aligned and indexed. There is really no affordable alternative for this 35-year old bull gear. It would have to be custom fabricated, which is both time consuming and costly.

For more examples of Belzona Know - How In Action, please visit <https://khia.belzona.com>

ISO 9001:2015

FS 695214

ISO 14001:2015

EMS 695213

Belzona products are
manufactured under an ISO
9000 Registered Quality
Management System.

www.belzona.com

BELZONA
Repair • Protect • Improve