

SEVERE EROSION IS NO MATCH FOR BELZONA

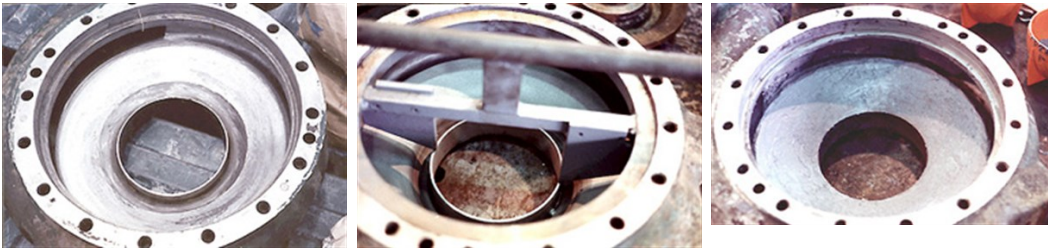
ID: 343

Industry: Sugar
Application: CEP-Centrifugal Pumps
Substrate: 316 Stainless steel
Products: * Belzona® 1111 (Super Metal) ,
* Belzona® 1391 ,

Customer Location: Sugar mill in Florida, U.S.A.
Application Date: May 1994

Problem

The sugar liquor pump housing near the impeller had suffered from severe erosion and exhibited extensive metal loss.



Photograph Descriptions

- * Housing demonstrating extensive wear ,
- * A template was used to restore the original profile ,
- * Housing rebuilt to the original profile and coated to handle high temperature service ,

Application Situation

End suction pump for sugar liquor.

Application Method

The application was carried out in accordance with a modified version of Belzona Know-How System Leaflets CEP-3 and CEP-5. A fixture was used to rebuild the extensive metal loss and maintain tolerances with the impeller.

Belzona Facts

Two housings were completed. The replacement cost for these housings would have been \$11,000. The Belzona solution was \$1,665.00, which is an 85% cost savings versus replacement.

For more examples of Belzona Know - How In Action, please visit <https://khia.belzona.com>

ISO 9001:2015
FS 695214
ISO 14001:2015
EMS 695213

Belzona products are
manufactured under an ISO
9000 Registered Quality
Management System.

www.belzona.com

**BELZONA**
Repair • Protect • Improve