

BELZONA REPAIR AND PROTECTION OF HYDRO PLANT DRAFT TUBE

ID: 3634

Industry: Power

Customer Location: Hydroelectric power station, north Sweden.

Application: CEP-Centrifugal Pumps

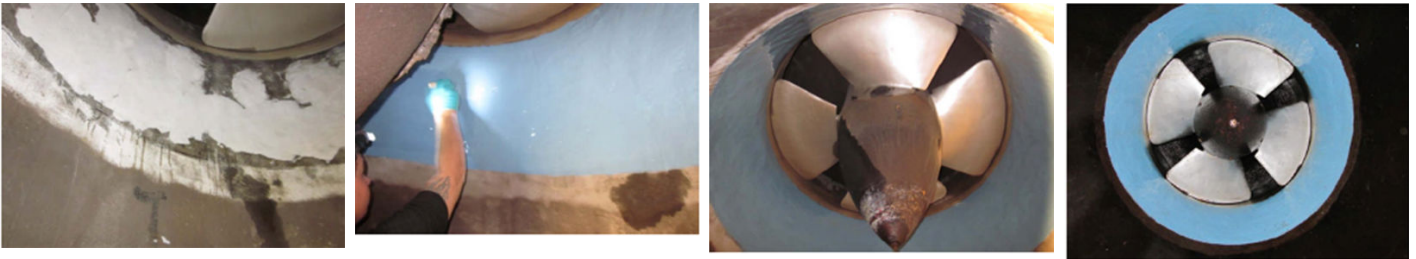
Application Date: Sept. 2010

Substrate: Concrete

Products: * Belzona® 4111 (Magma Quartz) Belzona® 1341 (Supermetalgilde) ,

Problem

Severe damage caused by cavitation in the upper part of the draft tube.



Photograph Descriptions

- * The draft tube being repaired with Belzona® 4111 ,
- * The repair area being coated with Belzona® 1341 ,
- * The finished application ,
- * The application one year later ,

Application Situation

Hydroelectric power plant draft tube.

Application Method

Application was carried out in accordance with Belzona Know-How System Leaflet CEP-10. After drying and preparing substrate Belzona® 4111 was used to rebuild damaged concrete before coating with Belzona® 1341.

Belzona Facts

When the job was inspected one year later, the customer was extremely satisfied with what he found and Belzona has become the standard repair solution for future repairs on draft tubes. A similar job was done in the autumn of 2011 and another job is planned for 2012.

For more examples of Belzona Know - How In Action, please visit <https://khia.belzona.com>

ISO 9001:2015
FS 695214
ISO 14001:2015
EMS 695213

Belzona products are
manufactured under an ISO
9000 Registered Quality
Management System.

www.belzona.com


BELZONA
Repair • Protect • Improve