

BELZONA BONDS SUPPORT PADS AND RAILS

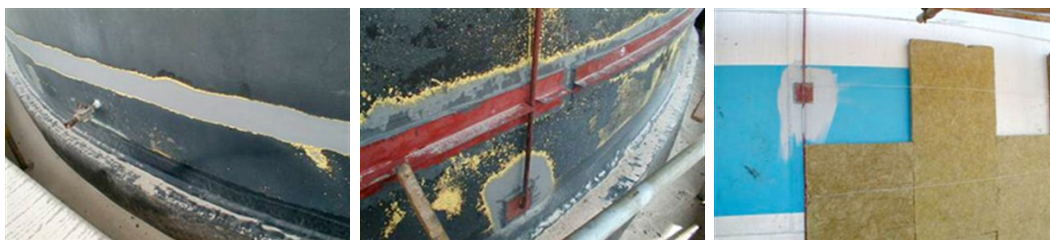
ID: 402

Industry: Oil & Gas
Application: TCC-Tanks and Chemical Containment Areas
Substrate: Carbon Steel
Products: * Belzona® 1111 (Super Metal) ,

Customer Location: Refinery - Brazil
Application Date: November 2001

Problem

Welding of metal rails was totally out of the question as it would have compromised the integrity of the internal coating.



Photograph Descriptions

- * Surface preparation consisted of blasting the exterior metal surface of the tank. ,
- * Soon thereafter, the pads and rails were installed using the Belzona® 1111. ,
- * The thermal insulation pads are being installed, using the rails as support members. ,

Application Situation

Bonding of support pads and rails.

Application Method

Application was carried out in accordance with a modified version of Belzona Know-How System Leaflet TCC-3.

Belzona Facts

Rails and support pads had to be installed to serve as a support structure for the thermal insulation pads. Ten more tanks have been completed since this initial application.

For more examples of Belzona Know - How In Action, please visit <https://khia.belzona.com>

ISO 9001:2015
FS 695214
ISO 14001:2015
EMS 695213

Belzona products are
manufactured under an ISO
9000 Registered Quality
Management System.

www.belzona.com


BELZONA®
Repair • Protect • Improve