

BELZONA PROVIDES PROTECTION FOR PRIMARY FAN PUMP

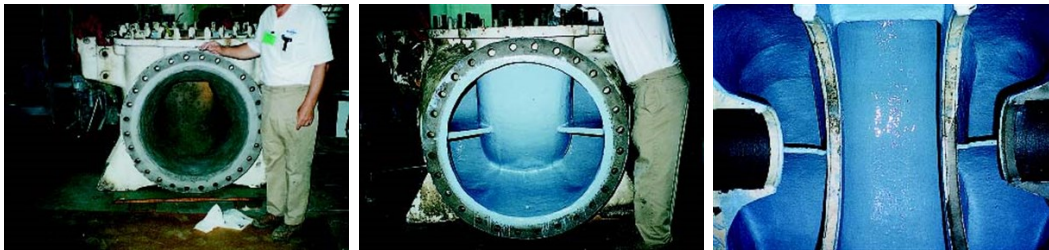
ID: 46

Industry: Pulp & Paper
Application: CEP-Centrifugal Pumps
Substrate: Cast iron
Products: * Belzona® 1311 (Ceramic R-Metal) ,
* Belzona® 1341 (Supermetalgilde) ,

Customer Location: Papermill in Oregon, U.S.A.
Application Date: April 1996

Problem

White water chemical attack of this large critical pump caused corrosion pitting of the cast iron pump case, as well as bi-metallic corrosion of the stuffing box.



Photograph Descriptions

- * Bottom section of the corroded fan pump ,
- * Final application of Belzona® 1311 to pump case ,
- * Rebuilt fan pump with Belzona® 1311 and Belzona® 1341 ,

Application Situation

Primary fan pump suffering from erosion/corrosion.

Application Method

The application was carried out in accordance with Belzona Know-How Leaflets CEP-2 and CEP-3.

Belzona Facts

Consultant was flown from Alabama to Oregon to supervise the application. Corrosion and scale build-up were eliminated and the pump is operating more efficiently to this day.

For more examples of Belzona Know - How In Action, please visit <https://khia.belzona.com>

ISO 9001:2015
FS 695214
ISO 14001:2015
EMS 695213

Belzona products are
manufactured under an ISO
9000 Registered Quality
Management System.

www.belzona.com


BELZONA®
Repair • Protect • Improve