

# BELZONA PROTECTS WASTEWATER PUMP FROM EROSION-CORROSION

ID: 4688

Industry: Water / Wastewater

Customer Location: Wastewater Plant, Niagara Region,  
Ontario, Canada

Application: CEP-Centrifugal Pumps

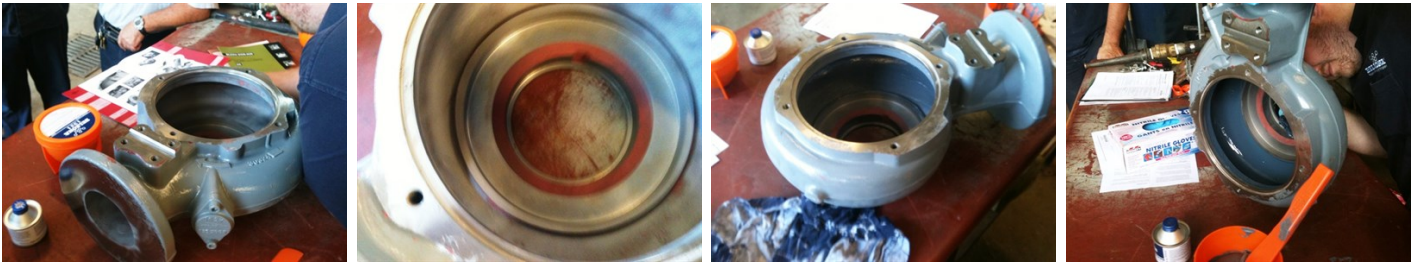
Application Date: September, 2013

Substrate: Cast Steel

Products: \* Belzona 1321 (Ceramic S-Metal) ,

## Problem

High levels of erosion-corrosion caused by entrained solids in wastewater media being pumped for processing.



## Photograph Descriptions

- \* View of new cast steel pump volute ,
- \* Prepared surface by abrasive blasting ,
- \* First coat of Belzona 1321 (Grey) applied ,
- \* Second coat of Belzona 1321 (Blue) applied ,

## Application Situation

Pumps in a regional Wastewater Authority.

## Application Method

Application was carried out by brush in accordance with Belzona Know-How System Leaflet CEP-03.

## Belzona Facts

Regional waste water authority routinely replaces its pumps, as it has been unsuccessful with previous coatings to protect against erosion and corrosion of entrained solids through its waste pumping system. Coating will allow client to continue using more cost effective steel castings instead of looking at more exotic alloys. The easy application of the Belzona 1321 in two colors and two coat system allows the internal maintenance team to complete the repairs internally and observe the level wear before it becomes critical.

For more examples of Belzona Know - How In Action, please visit <https://khia.belzona.com>

ISO 9001:2015  
FS 695214  
ISO 14001:2015  
EMS 695213

Belzona products are  
manufactured under an ISO  
9000 Registered Quality  
Management System.

[www.belzona.com](http://www.belzona.com)

**BELZONA**  
Repair • Protect • Improve