

BELZONA® 4111 (MAGMA-QUARTZ) KEEPS PRODUCTION ON TRACK

ID: 481

Industry: General Industry

Customer Location: Animal food manufacturer - Missouri
USA

Application: FPA-Floor Problem Areas

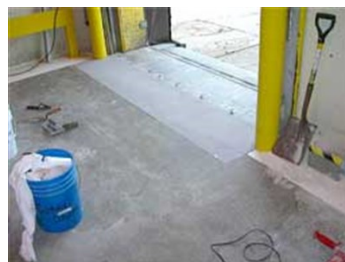
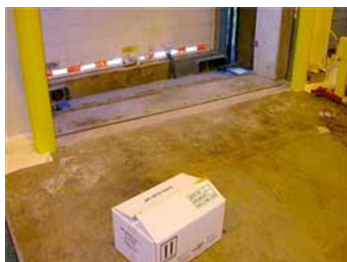
Application Date: November 2004

Substrate: Concrete & stainless steel

Products: * Belzona® 4111 (Magma-Quartz) ,

Problem

Fork lift traffic damaged stainless steel plate being bent by fork lift trucks pushing pallets into it and lifting it up. Needed a solution to avoid further damage.



Photograph Descriptions

- * Close up of the problem ,
- * Surface prepped ,
- * Ready for traffic ,

Application Situation

Loading dock - stainless steel plate

Application Method

Application was carried out in accordance with Belzona Know-How System Leaflets FPA-5 and FPA-10.

Belzona Facts

Very little time to consider alternatives, which would have been costly as the facility operates 24/7. Also, a government inspection was on the near horizon, and this problem could have caused the facility to fail an inspection. The use of Belzona® 4111 (Magma-Quartz) allowed the facility to quickly and very cost effectively keep production on track.

For more examples of Belzona Know - How In Action, please visit <https://khia.belzona.com>

ISO 9001:2015
FS 695214
ISO 14001:2015
EMS 695213

Belzona products are
manufactured under an ISO
9000 Registered Quality
Management System.

www.belzona.com


BELZONA®
Repair • Protect • Improve