

BELZONA REPAIRS SWING SHAFT BUSHING

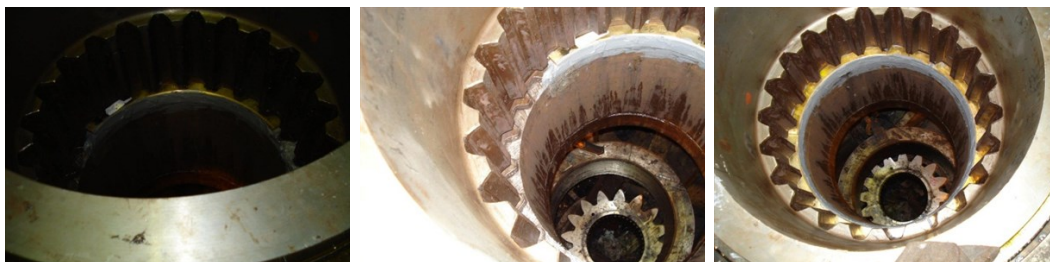
ID: 4886

Industry: *Mining & Quarrying*
Application: *GSS-Gaskets, Seals and Shims*
Substrate: *Steel*
Products: ** Belzona 1111 (Super Metal) ,*

Customer Location: *Mining Industry, USA*
Application Date: *October 2009*

Problem

Swing shaft bushing are segmented brass and fit loosely. Belzona was used to shim the OEM bushings for a tighter fit.



Photograph Descriptions

- * Damaged bushing ,
- * Application in progress ,
- * Complete application ,

Application Situation

Damaged swing shaft bushing on a dragline

Application Method

Application was carried out in accordance with Belzona Know-How System Leaflet GSS-7. Surface was cleaned and degreased from oils and prepared using hand tools.

Belzona Facts

Bushings were replaced often due to the loose fit. Belzona 1111 repair augmented the OEM fit thus improving run life.

For more examples of Belzona Know - How In Action, please visit <https://khia.belzona.com>

ISO 9001:2015
FS 695214
ISO 14001:2015
EMS 695213

Belzona products are
manufactured under an ISO
9000 Registered Quality
Management System.

www.belzona.com


BELZONA®
Repair • Protect • Improve