

# LOWER HALF OF KNOCK OUT VESSEL PROTECTED WITH BELZONA

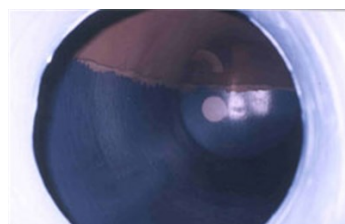
ID: 489

**Industry:** Chemical & Petrochemical  
**Application:** TCC-Tanks and Chemical Containment Areas  
**Substrate:** Steel  
**Products:** \* Belzona® 1311 (Ceramic R-Metal) ,  
\* Belzona® 1391 (Ceramic HT Metal) ,

**Customer Location:** Oil Refinery-Australia  
**Application Date:** May 2004

## Problem

*Internal erosion corrosion in lower section caused by sour water. Vessel regularly steamed out.*



## Photograph Descriptions

- \* Typical limited access to vessel through manway ,
- \* Application of Belzona® 1391 underway ,
- \* Completed application ,

## Application Situation

Liquid knock out for flare gases. Also exposed to MEK, Toluene and gasoline.

## Application Method

Application was carried out in accordance with Belzona Know-How System Leaflet TCC-5. Belzona® 1311 was used to repair pitting (particularly in 4-8 o'clock positions) and to smooth out weld repairs after which the lower half of the vessel was coated with Belzona® 1391.

## Belzona Facts

Previous coating had failed. Belzona had previously been used for local repairs before this shut-down and had proven itself in the environment.

For more examples of Belzona Know - How In Action, please visit <https://khia.belzona.com>

ISO 9001:2015  
FS 695214  
ISO 14001:2015  
EMS 695213

Belzona products are  
manufactured under an ISO  
9000 Registered Quality  
Management System.

[www.belzona.com](http://www.belzona.com)

  
**BELZONA®**  
Repair • Protect • Improve