

INTERNAL COATING FOR CENTRIFUGAL PUMP

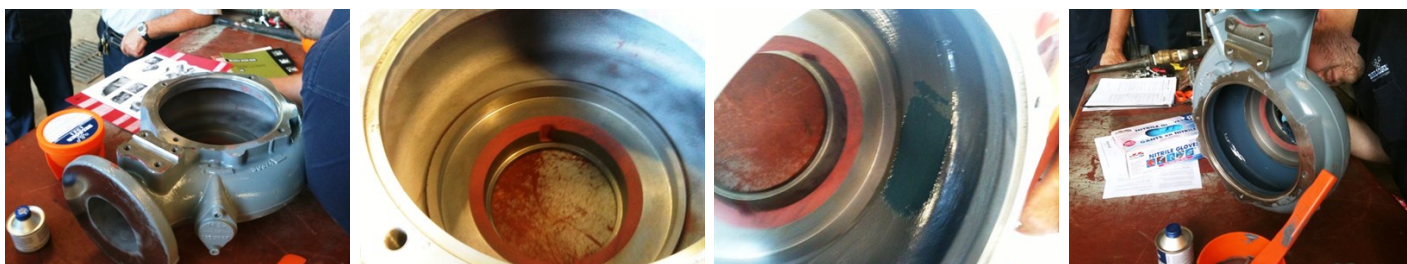
ID: 4922

Industry: Water / Wastewater
Application: CEP-Centrifugal Pumps
Substrate: Steel
Products: * Belzona 1321 (Ceramic S-Metal) ,
* Belzona 9111 (Cleaner Degreaser) ,

Customer Location: Niagara, Ontario, Canada
Application Date: September 2013

Problem

A customer wanted to protect and expand the life of a new pump due to installed at the plant to replace the existing pump which was suffering from corrosion/erosion due to sewage waste.



Photograph Descriptions

- * Centrifugal Pump Prior to Application ,
- * Preparation Complete ,
- * Application ,
- * Completed Application ,

Application Situation

Centrifugal pump is used to transport fluids in the waste water treatment plant

Application Method

Application was carried out in accordance with Belzona Know-How System Leaflet CEP-3. The surface was prepared by grit blasting the entire surface to be coated, brushing away any loose contamination and washing the surface with Belzona 9111. Belzona 1321 was applied directly on to the prepared surface with a stiff bristle brush in accordance with the Belzona Instructions For Use.

Belzona Facts

Belzona 1321 will protect from abrasion and erosion - corrosion. This also has outstanding chemical resistance with high compressive strength and does not corrode. Belzona 1321 is designed to operate under continuous immersion at temperatures up to 140°F (60°C)

For more examples of Belzona Know - How In Action, please visit <https://khia.belzona.com>

ISO 9001:2015
FS 695214
ISO 14001:2015
EMS 695213

Belzona products are
manufactured under an ISO
9000 Registered Quality
Management System.

www.belzona.com


BELZONA®
Repair • Protect • Improve

For more examples of Belzona Know - How In Action, please visit <https://khia.belzona.com>

ISO 9001:2015
FS 695214
ISO 14001:2015
EMS 695213

Belzona products are
manufactured under an ISO
9000 Registered Quality
Management System.

www.belzona.com

Copyright © Belzona International Limited 2024

