

BELZONA REPAIRS GLASS LINED REACTOR

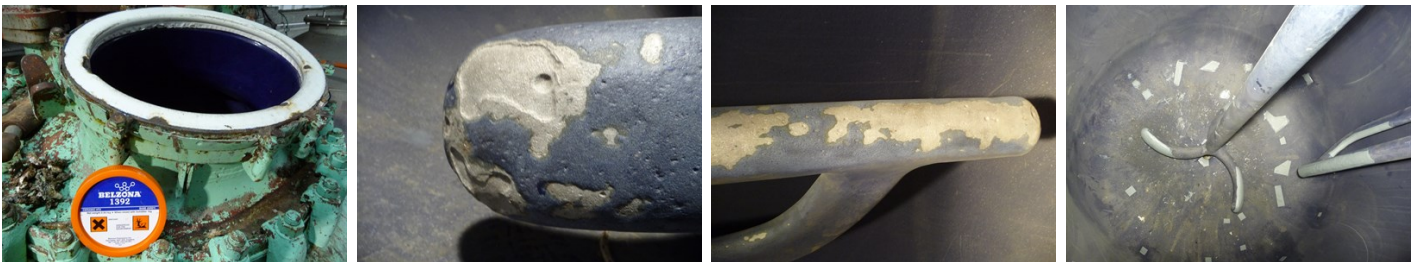
ID: 4940

Industry: Chemical & Petrochemical
Application: TCC-Tanks and Chemical Containment Areas
Substrate: Steel & Glass
Products: * Belzona 1311 (Ceramic R-Metal) ,
* Belzona 1392 (Ceramic HT2) ,

Customer Location: Chemical Plant, Israel
Application Date: 2009

Problem

Due to the operational environment the glass lining in the reactor and on the agitator paddle was severely damaged exposing the base metal to severe corrosion.



Photograph Descriptions

- * The reactor ,
- * Damage on the paddle ,
- * Reactor damage ,
- * Completed reactor repairs ,

Application Situation

Chemical Reactor used to produce industrial cleaners and disinfectants. The process uses a mixture of acids and alkalis at an operating temperature up to 70°C.

Application Method

Application was carried out in accordance with Belzona Know How System Leaflets TCC-3.

Belzona Facts

Due to the extent of damage, especially on the paddle area, no other repairs alternative was available. The only option was replacing the reactor with new unit. The Belzona solution was completed on site and the unit was back to service in two days. The unit was inspected in 2012 and apart from slight erosion on the paddle was found in excellent condition.

For more examples of Belzona Know - How In Action, please visit <https://khia.belzona.com>

ISO 9001:2015
FS 695214
ISO 14001:2015
EMS 695213

Belzona products are
manufactured under an ISO
9000 Registered Quality
Management System.

www.belzona.com


BELZONA[®]
Repair • Protect • Improve

For more examples of Belzona Know - How In Action, please visit <https://khia.belzona.com>

ISO 9001:2015
FS 695214
ISO 14001:2015
EMS 695213

Belzona products are
manufactured under an ISO
9000 Registered Quality
Management System.

www.belzona.com

