

# BELZONA REPAIRS & SAVES LARGE SPLIT CASE PUMP AT COAL MINE

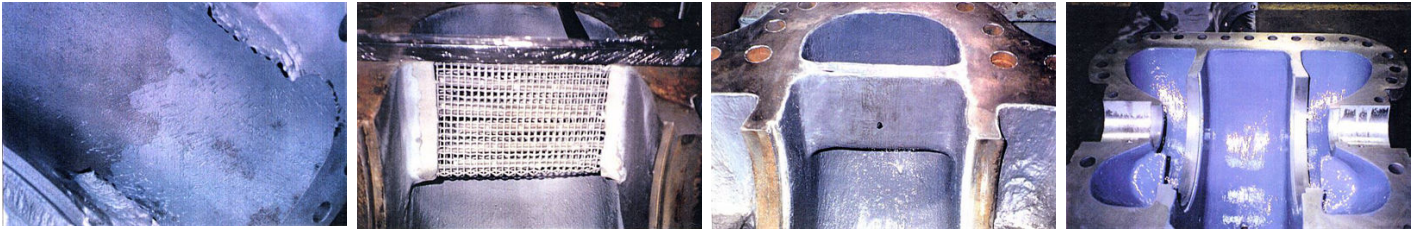
ID: 5186

Industry: General Industry  
Application: CEP-Centrifugal Pumps  
Substrate: Cast iron  
Products: \* Belzona 1311 (Ceramic R-Metal) ,  
\* Belzona 1321 (Ceramic S-Metal) ,

Customer Location: BC, Canada  
Application Date: 1996

## Problem

The splitter of this cast iron Worthington split case sludge pump had broken away. The mine engineers had originally discarded the "Belzona fix" and insisted that a new cast section be made and welded into place. This was duly done at great expense. The new splitter was "faired in" with Belzona 1311 and the pump internals coated. After operating for only a few weeks the pump started producing a rattling sound and on further inspection it was found that the new splitter had come adrift and the only thing keeping it in place was the Belzona product used to "fair it in". Because there was no replacement, it was decided to go ahead with the Belzona repair originally suggested but turned down.



## Photograph Descriptions

- \* Photograph shows cast splitter missing. Note the evidence of the specialized welding ,
- \* Fabrication of new splitter in progress ,
- \* Fabrication of new splitter completed with the mesh area filled with Belzona 1311 ,
- \* Pump internals completely protected with 2 coats of Belzona 1321 ,

## Application Situation

Broken cast iron splitter

## Application Method

The application was carried out in accordance with Belzona Know-How System Leaflet CEP-1 and CEP-3.

## Belzona Facts

After the 2nd repair using the Belzona solution the pump was returned to service and operated for 2 years at which stage it was removed to replace bearings and packings. An inspection revealed that the fabricated splitter was still in first rate condition and that

For more examples of Belzona Know - How In Action, please visit <https://khia.belzona.com>

ISO 9001:2015  
FS 695214  
ISO 14001:2015  
EMS 695213

Belzona products are  
manufactured under an ISO  
9000 Registered Quality  
Management System.

[www.belzona.com](http://www.belzona.com)

  
**BELZONA**<sup>®</sup>  
Repair • Protect • Improve

coating applied to the pump to protect it from sliding abrasion was still in perfect condition. Afterwards, the overall the pump was returned to service.

For more examples of Belzona Know - How In Action, please visit <https://khia.belzona.com>

ISO 9001:2015	Belzona products are
FS 695214	manufactured under an ISO
ISO 14001:2015	9000 Registered Quality
EMS 695213	Management System.

[www.belzona.com](http://www.belzona.com)

