

# BELZONA EXTENDS THE LIFE OF DAMAGED TIRE

ID: 5196

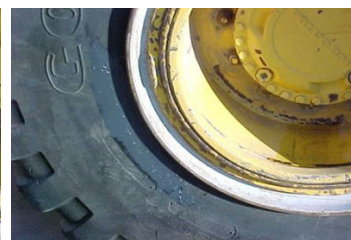
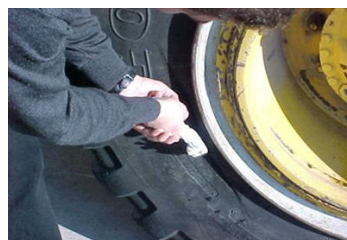
Industry: Mining & Quarrying  
Application: SHM-Solids Handling Machinery

Customer Location: BC, Canada  
Application Date: 1999

Substrate: Rubber  
Products: \* Belzona 2211 (MP Hi-Build Elastomer) ,

## Problem

*The side wall of a tire, close to the rim, had been cut by a stray piece of metal*



## Photograph Descriptions

- \* Vehicle with damaged tire ,
- \* Initial preparation underway with the removal of any loose material ,
- \* The surface around the damaged area is prepared with a special roughing tool ,
- \* Completed application. ,

## Application Situation

Repair of the side wall of a tire

## Application Method

Application carried out in accordance with a modified version of Belzona Know-How System Leaflet SHM-1. Surface around damaged area cleaned of loose road debris and roughen with a steel wire brush. Belzona 2911 (Elastomer QD Conditioner) was applied prior to Belzona 2211 to ensure proper adhesion.

## Belzona Facts

Repairing cuts like this as soon as possible after the event ensures that no further degradation of the tire will take place resulting from water or debris.

For more examples of Belzona Know - How In Action, please visit <https://khia.belzona.com>

ISO 9001:2015  
FS 695214  
ISO 14001:2015  
EMS 695213

Belzona products are  
manufactured under an ISO  
9000 Registered Quality  
Management System.

[www.belzona.com](http://www.belzona.com)

  
**BELZONA®**  
Repair • Protect • Improve