

BELZONA 1000 SERIES PRODUCTS RE-SEAT WEAR PLATES

ID: 5202

Industry: *Mining & Quarrying*

Application: *GSS-Gaskets, Seals and Shims*

Substrate: *Steel*

Products: ** Belzona 1121 (Super XL Metal) ,*

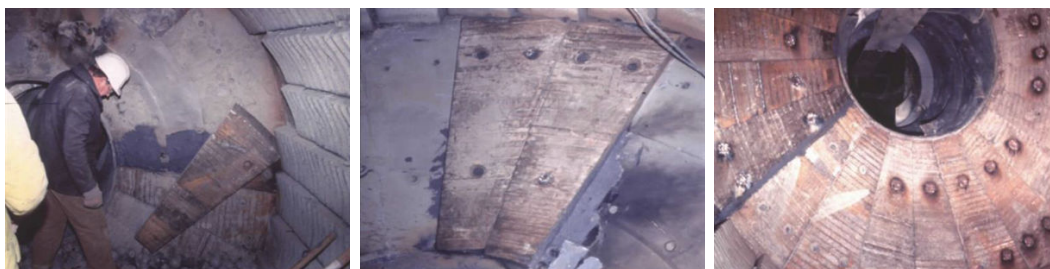
** Belzona 9411 (Release Agent) ,*

Customer Location: *UK*

Application Date: *1998*

Problem

The base plate of the Bradley Pulverizer had worn unevenly making it difficult to effectively reinstall new wear plates



Photograph Descriptions

- * Belzona 1121 has been applied to all the worn areas, while a release agent has been applied to the underside of the new wear plates to ensure that they are easily removed when required ,
- * Installation in progress ,
- * Completed application. ,

Application Situation

Worn Bradley Pulverizer

Application Method

Application carried out in accordance with a modified version of Belzona Know-How System Leaflet GSS-8

Belzona Facts

Because of the crushing forces involved, it is imperative that wear plates be supported 100% across their surface area. Failure to achieve this would induce early cracking of these plates necessitating an unscheduled shutdown.

For more examples of Belzona Know - How In Action, please visit <https://khia.belzona.com>

ISO 9001:2015

FS 695214

ISO 14001:2015

EMS 695213

Belzona products are
manufactured under an ISO
9000 Registered Quality
Management System.

www.belzona.com


BELZONA®
Repair • Protect • Improve