

BELZONA REPAIRS BEARING SADDLE SUPPORT

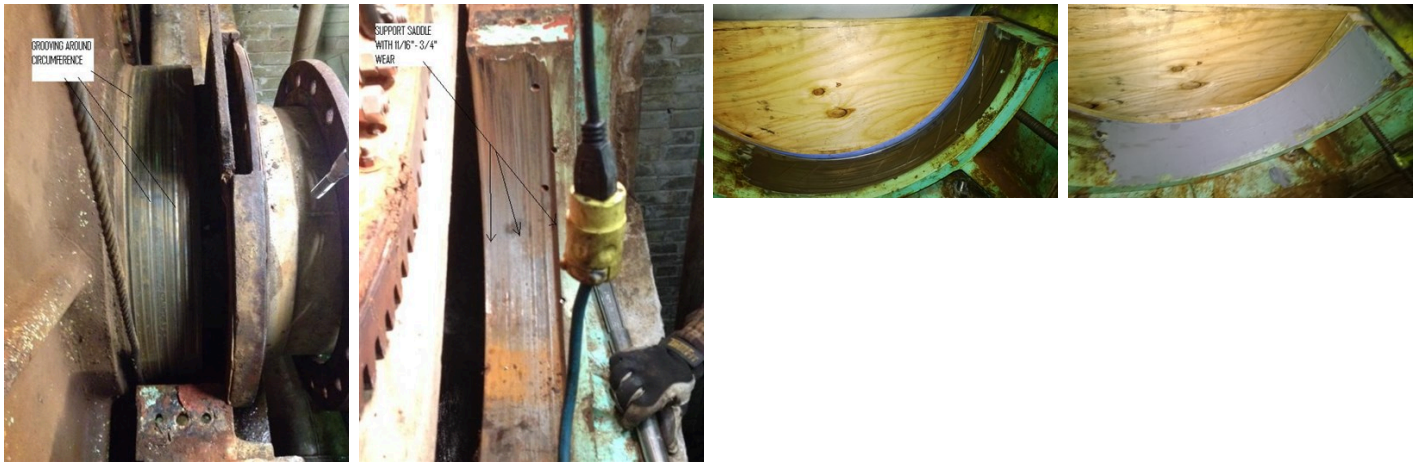
ID: 5209

Industry: General Industry
Application: ENC-Engines and Casings
Substrate: Steel
Products: * Belzona 1111 (Super Metal) ,

Customer Location: New England, USA
Application Date: Fall 2013

Problem

Severe metal loss from entrained solids in flowing water. During inspection, it was noted that a water screen bearing was grooved from abrasion. Upon removal for repair with Belzona 1111, it was further found that the support saddle was severely worn (3/4" +/-) under the bearing itself.



Photograph Descriptions

- * Grooved bearing surface ,
- * Support saddle showing deep grooves ,
- * Plywood & gasket former ,
- * Completed application ,

Application Situation

Bearing saddle support.

Application Method

Hand tools, such as grinder, were used to prepare the surface. A plywood former was built to provide the profile depth. The application was carried out in accordance with a modified version of Belzona Know-How System Leaflet ENC-3b.

For more examples of Belzona Know - How In Action, please visit <https://khia.belzona.com>

ISO 9001:2015
FS 695214
ISO 14001:2015
EMS 695213

Belzona products are
manufactured under an ISO
9000 Registered Quality
Management System.

www.belzona.com


BELZONA[®]
Repair • Protect • Improve

Belzona Facts

The plant has used Belzona 1111 in the shop for a variety of repairs. The superintendent was only concerned if he had enough Belzona 1111 on hand to complete the application because of the scheduled downtime.

For more examples of Belzona Know - How In Action, please visit <https://khia.belzona.com>

ISO 9001:2015
FS 695214
ISO 14001:2015
EMS 695213

Belzona products are
manufactured under an ISO
9000 Registered Quality
Management System.

www.belzona.com

