

BELZONA REPAIRS SLURRY PUMP

ID: 5224

Industry: Power

Application: SHM-Solids Handling Machinery

Customer Location: Kansas, USA

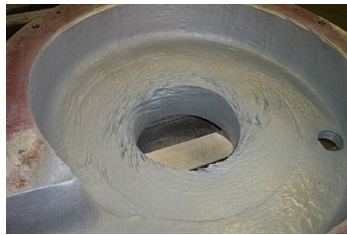
Application Date: October 2003

Substrate: Stainless steel

Products: * Belzona 1812 (Ceramic Carbide FP) ,

Problem

One of the plant's ash slurry pumps showed signs of severe erosion. Due to the extreme pitting and metal loss caused by entrainment, the plant would have resigned to discarding this pump and replacing it with a new one.



Photograph Descriptions

- * Plant site overview ,
- * Damaged pump prior to blasting ,
- * Blasted surface of pump ,
- * Completed application ,

Application Situation

Scheduled maintenance outage at power plant for an in-service ash slurry pump.

Application Method

Belzona offered a perfect alternative to replacing this stainless steel classifier pump. The application was carried out in accordance with Belzona Know-How System Leaflet SHM-11 using Belzona 1812.

Belzona Facts

In the past, this pump would have been scrapped and replaced, at a cost of \$6,500. The Belzona solution only costs \$1,000 and can be easily accomplished by the in-house plant maintenance personnel, thus saving the power company well over \$5,000 on only one pump.

For more examples of Belzona Know - How In Action, please visit <https://khia.belzona.com>

ISO 9001:2015

FS 695214

ISO 14001:2015

EMS 695213

Belzona products are
manufactured under an ISO
9000 Registered Quality
Management System.

www.belzona.com


BELZONA
Repair • Protect • Improve

Copyright © Belzona International Limited 2024