

BELZONA PROTECTS AND COATS PUMPS

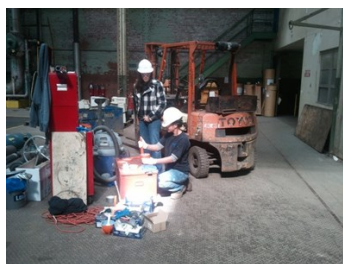
ID: 5226

Industry: Power
Application: CEP-Centrifugal Pumps
Substrate: Steel and cast iron
Products: * Belzona 1311 (Ceramic R-Metal) ,
* Belzona 1341 (Supermetalgilde) ,

Customer Location: MO, USA
Application Date: March 2011

Problem

The customer wanted to re-coat the pump although it showed very little sign of wear.



Photograph Descriptions

- * View of the Energy Company ,
- * Previous application by Belzona ,
- * Preparing the product for application ,
- * Completed application ,

Application Situation

During a scheduled maintenance outage, the customer wanted a pump that was previously protected with Belzona to be remediated while it was out for inspection. Note: this pump was still performing as expected.

Application Method

All of the equipment receiving the Belzona coating was grit blasted with Black Beauty and then cleaned. Any severe pitting and erosion was addressed by rebuilding with Belzona 1311 and finished with two coats of Belzona 1341, the known pump-efficiency enhancement system. The application was carried out in accordance with Belzona Know-How System Leaflets CEP-3 & CEP-5.

Belzona Facts

Belzona 1341 has proven to withstand many of in-service hours and years for this customer. Knowing the confidence our customer places in Belzona allows us the many opportunities to continue providing products and services for the years to come.

For more examples of Belzona Know - How In Action, please visit <https://khia.belzona.com>

ISO 9001:2015
FS 695214
ISO 14001:2015
EMS 695213

Belzona products are
manufactured under an ISO
9000 Registered Quality
Management System.

www.belzona.com


BELZONA
Repair • Protect • Improve