

STEEL OF A RAILWAY PROTECTED WITH BELZONA

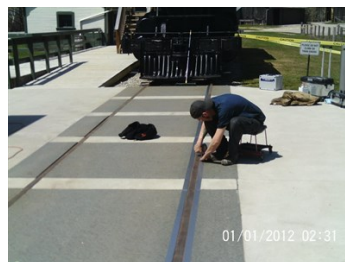
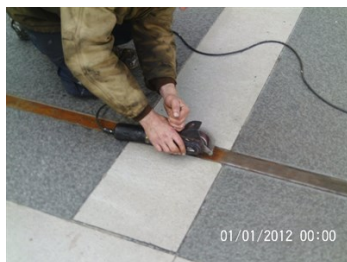
ID: 5253

Industry: *Transport*
Application: *FPA-Floor Problem Areas*
Substrate: *Steel*
Products: ** Belzona 4151 (Magma-Quartz Resin) ,*

Customer Location: *Kitchener, ON, Canada*
Application Date: *March 2013*

Problem

Corrosion on the steel of a railway.



Photograph Descriptions

- * Prior to application ,
- * Preparation in progress ,
- * Preparation in progress ,
- * Completed application ,

Application Situation

Railway at a museum.

Application Method

The application was carried out in accordance with Belzona Know-How System Leaflet FPA-3 for protecting floors and drains against chemical attack. A MBX bristle blaster was used to remove any rust and to prepare the surface for application. Belzona 4151 was brush applied in accordance with Belzona Instructions For Use.

Belzona Facts

Belzona 4151 is a two-component system that provides a tough, seamless coating suitable for protecting various substrates from moisture ingress, chemical attack and resistance to environmental attack. Belzona 4151 can be applied and cured under adverse conditions and has excellent adhesion to many substrates.

For more examples of Belzona Know - How In Action, please visit <https://khia.belzona.com>

ISO 9001:2015
FS 695214
ISO 14001:2015
EMS 695213

Belzona products are
manufactured under an ISO
9000 Registered Quality
Management System.

www.belzona.com


BELZONA®
Repair • Protect • Improve