

BELZONA REPAIRS PROFILE OF HYDROELECTRIC DAM

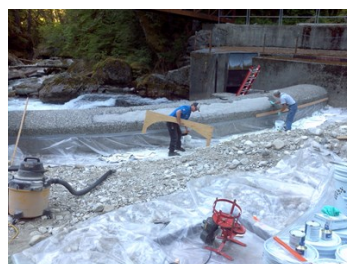
ID: 5285

Industry: Power
Application: FPA-Floor Problem Areas
Substrate: Concrete and exposed reinforcing bar
Products: * Belzona 4111 (Magma-Quartz) ,

Customer Location: Washington, USA
Application Date: October 2012

Problem

The profile of a small hydroelectric dam became worn, exposing reinforcing bar, which was caused by damage from VW sized boulders tumbling into and over the face of dam during spring runoff. The client was concerned about maintaining the integrity of the small hydroelectric dam and restoring the original profile.



Photograph Descriptions

- * Dam (ogee) profile before repairs ,
- * Several pallets of Belzona 4111 on site ,
- * Dam repairs underway - note templates & mixer ,
- * Completed application ,

Application Situation

Rebuilding the profile of a small hydroelectric dam.

Application Method

With the help of plywood templates, the dam profile was rebuilt with Belzona 4111 applied by hand. The application time was limited due to possible mountain runoff. Work was tightly monitored and contained so as not to pollute nearby fish spawning grounds.

Belzona Facts

The client was previously familiar with the bond strength and mechanical properties of Belzona 4111. Several other comparable materials had been considered.

For more examples of Belzona Know - How In Action, please visit <https://khia.belzona.com>

ISO 9001:2015
FS 695214
ISO 14001:2015
EMS 695213

Belzona products are
manufactured under an ISO
9000 Registered Quality
Management System.

www.belzona.com


BELZONA
Repair • Protect • Improve