

BELZONA REPAIRS ERODED AND CAVITATED RUDDER HORN

ID: 5295

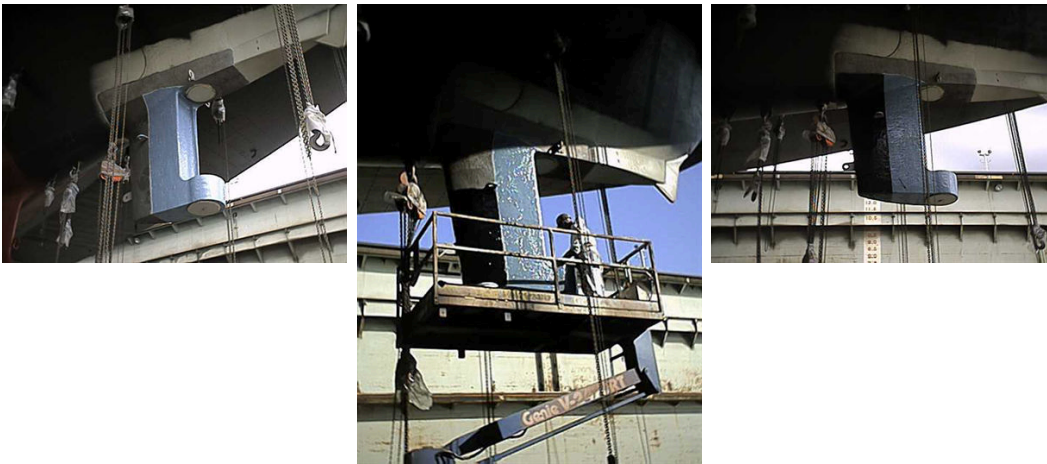
Industry: *Marine*
Application: *SOS-Ships and Offshore Structures*

Customer Location: *BC, Canada*
Application Date: *April 2002*

Substrate: *Cast steel*
Products: ** Belzona 1311 (Ceramic R-Metal) ,*
** Belzona 1341 (Supermetalglide) ,*
** Belzona 2941 (Elastomer SP-Conditioner) ,*
** Belzona 2141 (ACR-Fluid Elastomer) ,*

Problem

Bi-metallic corrosion had eroded much of the metal around the pintle mounting area, while the leading edge was subject to severe cavitation attack.



Photograph Descriptions

- * View of application in progress. ,
- * Application of Belzona 2141 in progress. ,
- * Completed application. ,

Application Situation

Eroded rudder horn

Application Method

Belzona 1311 rebuilt the eroded trailing portion of the horn. Then it was protected with 2 coats of Belzona 1341. Leading edge was primed with Belzona 2941 in preparation of Belzona 2141 application. The application was carried out in accordance with Belzona

For more examples of Belzona Know - How In Action, please visit <https://khia.belzona.com>

ISO 9001:2015
FS 695214
ISO 14001:2015
EMS 695213

Belzona products are
manufactured under an ISO
9000 Registered Quality
Management System.

www.belzona.com


BELZONA[®]
Repair • Protect • Improve

Know-How System Leaflets SOS-1 and SOS-2.

Belzona Facts

Using Belzona eliminated the need of extensive welding to restore the lost metal.

For more examples of Belzona Know - How In Action, please visit <https://khia.belzona.com>

ISO 9001:2015
FS 695214
ISO 14001:2015
EMS 695213

Belzona products are
manufactured under an ISO
9000 Registered Quality
Management System.

www.belzona.com

