

BELZONA EXTENDS THE LIFE OF A WATER PUMP

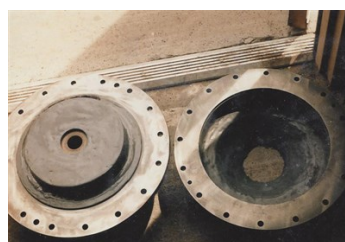
ID: 5334

Industry: Food & Drink
Application: CEP-Centrifugal Pumps
Substrate: Cast Iron
Products: * Belzona 2131 (D & A Fluid Elastomer) ,
* Belzona 1321 (Ceramic S-Metal) ,
* Belzona 4911 (Magma TX Conditioner) ,

Customer Location: Washington, USA
Application Date: 1992

Problem

The pump removes dirty water used to wash potatoes as they enter the processing plant. The entrained dirt wears the pump impeller prematurely.



Photograph Descriptions

- * New impeller blasted and conditioned ,
- * Impeller coated with Belzona 2131 ,
- * Two coats of Belzona 1321 applied to casing ,

Application Situation

Water Pump.

Application Method

The new pump was grit blasted. Belzona 4911 was applied to the impeller and allowed to cure. Belzona 2131 was brushed onto the surface. Two coats of Belzona 1321 was applied to the casing. The application was carried out in accordance with Belzona Know-How System Leaflets CEP-1 & CEP-3.

Belzona Facts

The coating extended the life of the pump, reducing maintenance costs and downtime.

For more examples of Belzona Know - How In Action, please visit <https://khia.belzona.com>

ISO 9001:2015
FS 695214
ISO 14001:2015
EMS 695213

Belzona products are
manufactured under an ISO
9000 Registered Quality
Management System.

www.belzona.com


BELZONA[®]
Repair • Protect • Improve