

BELZONA GIVES NEW LIFE TO PUMP CUTWATER

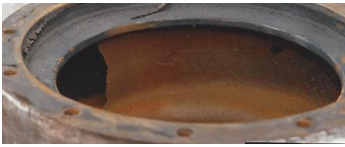
ID: 5336

Industry: Food & Drink
Application: CEP-Centrifugal Pumps
Substrate: Cast Iron
Products: * Belzona 1311 (Ceramic R-Metal) ,
* Belzona 1341 (Supermetalgilde) ,

Customer Location: Othello, WA
Application Date: 1992

Problem

The worn cutwater had reduced the performance ability of this pump.



Photograph Descriptions

- * Worn cutwater ,
- * Cutwater rebuilt, ready for coating ,
- * Pump casing with two coats of Belzona 1341 ,
- * Pump casing with two coats of Belzona 1341 ,

Application Situation

Potato plant water pump.

Application Method

The pump casing was grit blasted. The cutwater was rebuilt in accordance with Belzona Know-How System Leaflet CEP-1. The pump casing was coated with two layers of Belzona 1341.

Belzona Facts

This casing was one of several pulled from the scrap pile. It was repaired, coated and put back on the shelf to be installed later. The replacement cost was many times the cost of rebuilding with Belzona.

For more examples of Belzona Know - How In Action, please visit <https://khia.belzona.com>

ISO 9001:2015
FS 695214
ISO 14001:2015
EMS 695213

Belzona products are
manufactured under an ISO
9000 Registered Quality
Management System.

www.belzona.com


BELZONA[®]
Repair • Protect • Improve