

# BELZONA SAVES TIME BY REBUILDING SHAFT

ID: 5344

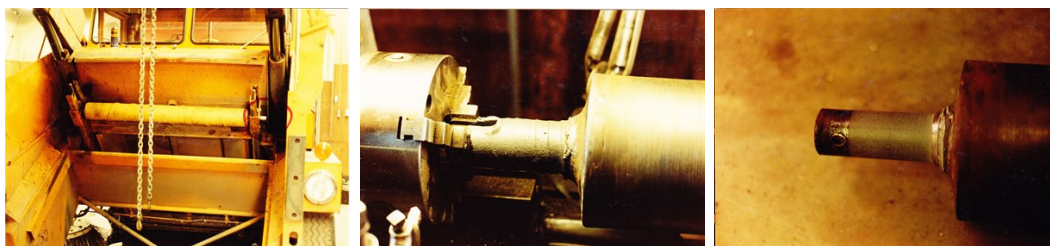
Industry: *General Industry*  
Application: *MPT-Mechanical Power Transmission*

Customer Location: *Anchorage, AK, USA*  
Application Date: *1982*

Substrate: *Steel*  
Products: *\* Belzona 1111 (Super Metal) ,*

## Problem

*A seized bearing damaged the shaft.*



## Photograph Descriptions

- \* Location of worn shaft on street sweeper ,
- \* Shaft mounted in lathe, rebuilt with Belzona 1111 ,
- \* Completed application to rebuild shaft, ready to be reinstalled ,

## Application Situation

Belt drive shaft on a street sweeper.

## Application Method

The shaft that was mounted in a lathe was undercut and Belzona 1111 was applied. Afterwards, it was machined to match its original profile. The keyway was pressed into place during the cure so it would not require extra machining. The shaft returned to its original size and installed in the sweeper. The application was carried out in accordance with Belzona Know-How System Leaflet MPT-1.

## Belzona Facts

A new shaft would take over a month to be delivered. With Belzona, the shaft was rebuilt and the sweeper was back in service the next morning.

For more examples of Belzona Know - How In Action, please visit <https://khia.belzona.com>

ISO 9001:2015  
FS 695214  
ISO 14001:2015  
EMS 695213

Belzona products are  
manufactured under an ISO  
9000 Registered Quality  
Management System.

[www.belzona.com](http://www.belzona.com)

  
**BELZONA®**  
Repair • Protect • Improve