

BELZONA HELPS FIREFIGHTERS DO THEIR JOB

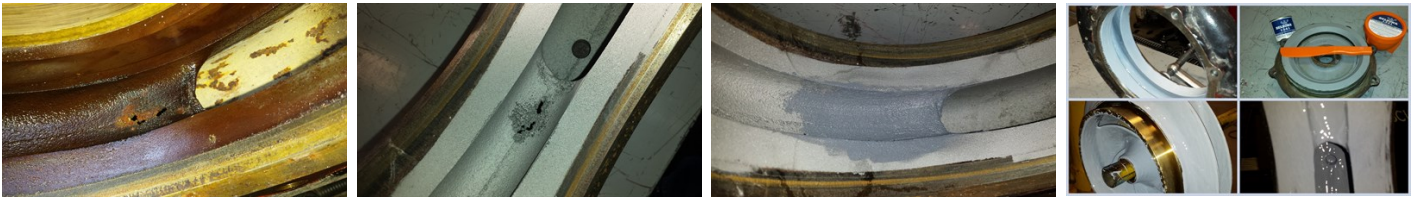
ID: 5480

Industry:
Application: CEP-Centrifugal Pumps
Substrate: Steel and Brass
Products: * Belzona 1311 (Ceramic R-Metal) ,
* Belzona 1341 (Supermetalglide) ,

Customer Location: Spokane Valley, WA, USA
Application Date: October 2014

Problem

Pump cavitation damage.



Photograph Descriptions

- * Corrosion damage ,
- * Grit blasted and ready for the application of Belzona 1311 ,
- * Application of Belzona 1311 ,
- * All parts coated and ready for assembly ,

Application Situation

Water pump on a firetruck.

Application Method

The application was carried out in accordance with the Belzona Know-How System Leaflets CEP-1 and CEP-3. Surface preparation was carried out by grit blasting to a near white finish. Belzona 1311 was applied by using a formed piece of applicator trimmed down to the same size and shape of the damaged volute area. Belzona 1341 was brush applied in two coats as recommended.

Belzona Facts

The existing pump was only 5 years old and showing heavy cavitation damage. The pump casing would have been fairly expensive to replace. With maybe \$5.00 USD of Belzona 1311 used to repair the damage and one unit of Belzona 1341 used to coat the impeller and the inside of the pump, it was a very cost effective repair. Additional benefits included an increase in the pump's efficiency when it was tested following reassembly.

For more examples of Belzona Know - How In Action, please visit <https://khia.belzona.com>

ISO 9001:2015
FS 695214
ISO 14001:2015
EMS 695213

Belzona products are
manufactured under an ISO
9000 Registered Quality
Management System.

www.belzona.com

**BELZONA**
Repair • Protect • Improve