

# Belzona Saves Significant Downtime for Cement Plant

ID: 550

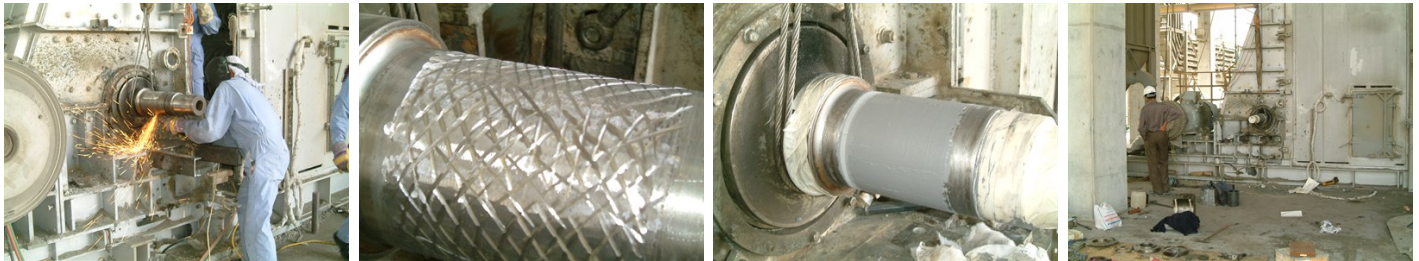
Industry: Cement  
Application: MPT-Mechanical Power Transmission

Customer Location: Cement plant - United Arab Emirates  
Application Date: May 2005

Substrate: Steel  
Products: \* Belzona® 1121 (Super XL-Metal) ,

## Problem

Bearing area of the 155mm shaft was down due to bearing failure, causing the entire operation to shut down.



## Photograph Descriptions

- \* Surface preparation in progress ,
- \* Prepared surface, ready for Belzona to be applied ,
- \* Completed application ,
- \* General view of crusher shaft in operation after the application ,

## Application Situation

Crusher shaft

## Application Method

Application was carried out in accordance with Belzona Know-How System Leaflet MPT-1 and MPT-2.

## Belzona Facts

An alternative method would be to weld and grind the shaft, but this is not possible in situ. Removal of the shaft from the equipment would require over 100 hours of downtime as no spare part was available. With Belzona, this customer was back up and running in hours, not days, saving significant amounts of money from lost production and downtime.

For more examples of Belzona Know - How In Action, please visit <https://khia.belzona.com>

ISO 9001:2015  
FS 695214  
ISO 14001:2015  
EMS 695213

Belzona products are  
manufactured under an ISO  
9000 Registered Quality  
Management System.

[www.belzona.com](http://www.belzona.com)

  
**BELZONA®**  
Repair • Protect • Improve