

# BELZONA REPAIRS AND PROTECTS TURBINE ROTOR

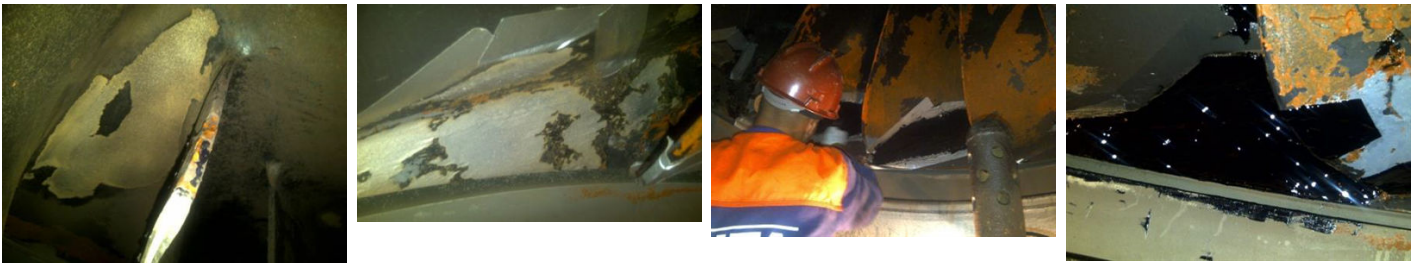
ID: 5615

**Industry:** Power  
**Application:** CEP-Centrifugal Pumps  
**Substrate:** Stainless steel  
**Products:** \* Belzona 1311 (Ceramic R-Metal) ,  
\* Belzona 2141 (ARC-Fluid Elastomer) ,  
\* Belzona 2941 (Elastomer SP-Conditioner) ,

**Customer Location:** Hydroelectric Power Plant, Brazil  
**Application Date:** September 2011

## Problem

Wear caused by the effects of erosion and cavitation to the rotor with a waterfall height of 110 meters.



## Photograph Descriptions

- \* Worn area of the rotor ,
- \* Defining the application area ,
- \* Application under progress ,
- \* Completed application ,

## Application Situation

Turbine rotor.

## Application Method

The application was carried out in accordance with Belzona Know-How System Leaflet CEP-1. The surface was prepared according to the standard NACE 2 (equivalent to SA 2 ½) with dry abrasive blast to near white metal. Belzona 1311 was applied to smooth the wear on the vanes (holes and loss of thickness) and then, Belzona 2141 was partially applied in certain areas of the rotor. Subsequently, Belzona 2141 was applied in 2 coats.

## Belzona Facts

Belzona attended to the customer's expectation, recovering and protecting the surface of the rotor with a long-lasting solution.

For more examples of Belzona Know - How In Action, please visit <https://khia.belzona.com>

ISO 9001:2015  
FS 695214  
ISO 14001:2015  
EMS 695213

Belzona products are  
manufactured under an ISO  
9000 Registered Quality  
Management System.

[www.belzona.com](http://www.belzona.com)

  
**BELZONA**<sup>®</sup>  
Repair • Protect • Improve