

BELZONA REPAIRS AND COATS HYDROELECTRIC TURBINE PIPELINES AND VANES

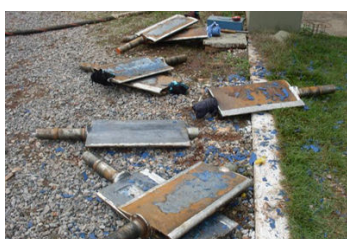
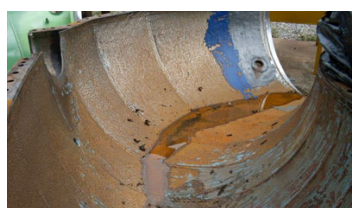
ID: 5618

Industry: *Power*
Application: *CEP-Centrifugal Pumps*
Substrate: *Mild steel*
Products: ** Belzona 1311 (Ceramic R-Metal) ,*
** Belzona 1321 (Ceramic S-Metal) ,*

Customer Location: *Hydroelectric Power Plant, Brazil*
Application Date: *November 2008*

Problem

Wear caused by erosion and corrosion in the areas with high water turbulence.



Photograph Descriptions

- * Internal surface of the damaged pipeline ,
- * Damaged vanes ,
- * Lower area of the pipeline coated with Belzona 1321 ,
- * Vanes protected with Belzona 1321 ,

Application Situation

Hydroelectric turbine pipelines and vanes.

Application Method

The application was carried out in accordance with Belzona Know-How System Leaflet CEP-1. The surface was prepared with a dry abrasive blast and cleaned with a degreaser. The worn areas were repaired with Belzona 1311 and then coated with Belzona 1321 to protect against erosion and corrosion.

Belzona Facts

As there was already a history with the successful use of Belzona products in a similar situation, the choice to apply Belzona 1311 and 1321 was once again made.

For more examples of Belzona Know - How In Action, please visit <https://khia.belzona.com>

ISO 9001:2015
FS 695214
ISO 14001:2015
EMS 695213

Belzona products are
manufactured under an ISO
9000 Registered Quality
Management System.

www.belzona.com


BELZONA
Repair • Protect • Improve