

BELZONA RECOVERS AND COATS ELECTRIC ENERGY POLE

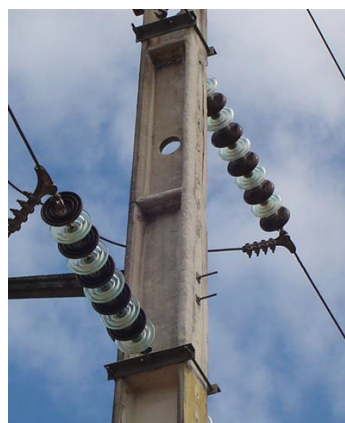
ID: 5619

Industry: Power
Application: WPA-Wall Problem Areas
Substrate: Concrete
Products: * Belzona 4141 (Magma-Build) ,
* Belzona 4911 (Magma TX Conditioner) ,

Customer Location: Electric Energy Utility, Brazil
Application Date: May 2006

Problem

Wear to the poles generated by environmental corrosion and/or excessive compression of the maintenance equipment necessary to raise them.



Photograph Descriptions

- * Pole with damages ,
- * Surface preparation ,
- * Completed application ,

Application Situation

Pole that supports lines with electric energy transmission.

Application Method

The application was carried out in accordance with Belzona Know-How System Leaflet WPA-4. The surface was prepared with various tools, such as a rotating brush, sledgehammer, chopper, emery cloth, drill with mounted tip, and sanding with a rotating wire brush. After this, Belzona 4911 was applied and then Belzona 4141 was used to recover the wear and restore the pole to its structural integrity.

For more examples of Belzona Know - How In Action, please visit <https://khia.belzona.com>

ISO 9001:2015
FS 695214
ISO 14001:2015
EMS 695213

Belzona products are
manufactured under an ISO
9000 Registered Quality
Management System.

www.belzona.com


BELZONA
Repair • Protect • Improve

Belzona Facts

Belzona has achieved the customer's expectations, which was to recover the wear of the pole and extend its working life.

For more examples of Belzona Know - How In Action, please visit <https://khia.belzona.com>

ISO 9001:2015
FS 695214
ISO 14001:2015
EMS 695213

Belzona products are
manufactured under an ISO
9000 Registered Quality
Management System.

www.belzona.com

