

BELZONA SAVES A CRUSHED CRUSHER

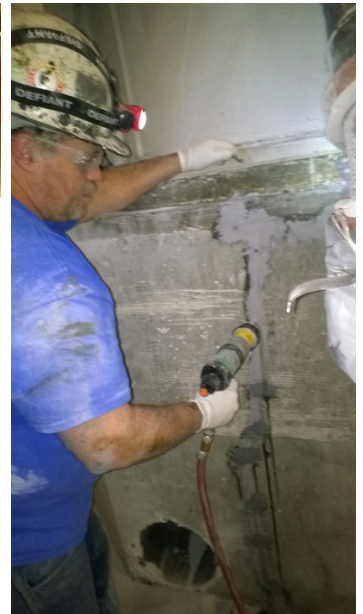
ID: 5638

Industry: Mining & Quarrying
Application: FPA-Floor Problem Areas
Substrate: Concrete
Products: * Belzona 1221 (Super E-Metal) ,
* Belzona 4911 (Magma TX Conditioner) ,
* Belzona 4111 (Magma-Quartz) ,
* Belzona 4151 (Magma-Quartz Resin) ,

Customer Location: Mining Plant, USA
Application Date: Fall, 2014

Problem

The concrete crusher pedestal developed cracks and caused excessive vibration during crusher operations, leading to premature bearing failure and production to slow down.



Photograph Descriptions

- * 1. Crusher overview ,
- * 2. Series of cracks in foundation ,
- * 3. Prepped, conditioned and injection screws ready to be overcoated with Belzona 4111 ,
- * 4. Injecting Belzona 4151 ,

Application Situation

Hard Rock Mine concrete crusher base.

Application Method

For more examples of Belzona Know - How In Action, please visit <https://khia.belzona.com>

ISO 9001:2015
FS 695214
ISO 14001:2015
EMS 695213

Belzona products are
manufactured under an ISO
9000 Registered Quality
Management System.

www.belzona.com


BELZONA®
Repair • Protect • Improve

Cracks were vee'd out by hand, drilled with injection holes, prepped and faired out with Belzona 4911 and Belzona 4111. Upon initial cure of Belzona 4111, Belzona 4151 resins were injected through the prepared ports under high pressure to chase and fill the underlying voids and cracks. Belzona 1221 was used to seal the injection holes.

Belzona Facts

Customer had previously tried mortar repairs, but the cracks ran very deep into the concrete and vibration caused the mortar to fail. Resin injection was suggested and customer felt it was a cost effective solution.

For more examples of Belzona Know - How In Action, please visit <https://khia.belzona.com>

ISO 9001:2015
FS 695214
ISO 14001:2015
EMS 695213

Belzona products are
manufactured under an ISO
9000 Registered Quality
Management System.

www.belzona.com

