

# BELZONA REPAIRS AND PROTECTS TURBINE

ID: 5639

Industry: Power

Application: CEP-Centrifugal Pumps

Substrate: Steel

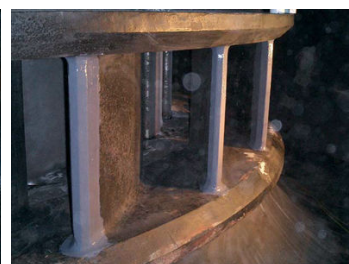
Products: \* Belzona 1111 (Super Metal) ,  
\* Belzona 1321 (Ceramic S-Metal) ,  
\* Belzona 9111 (Cleaner/Degreaser) ,

Customer Location: Hydroelectric Plant, Honduras

Application Date: December 2004

## Problem

Damage on the 24 turbine blades due to erosion and corrosion. 70% of the blades had the same type of problem.



## Photograph Descriptions

- \* Damage on the turbine blades ,
- \* Application of Belzona 1111 ,
- \* Application of Belzona 1321 ,
- \* Blades rebuilt and protected ,

## Application Situation

Turbine Blades

## Application Method

The surface preparation was carried out with mechanical tools, such as grinder, until the area was rough, clean and free from contamination. Belzona 9111 was applied to clean and decontaminate the area. The application was carried out in accordance with Belzona Know-How System Leaflet CEP-1. The application of Belzona 1111 was carried out in 2 hours on 24 blades. After the product cured, it was machined to give the final profiles to the blades. To protect the repair, Belzona 1321 was applied with a brush

For more examples of Belzona Know - How In Action, please visit <https://khia.belzona.com>

ISO 9001:2015  
FS 695214  
ISO 14001:2015  
EMS 695213

Belzona products are  
manufactured under an ISO  
9000 Registered Quality  
Management System.

[www.belzona.com](http://www.belzona.com)

  
**BELZONA**  
Repair • Protect • Improve

in a layer of 500 microns.

## Belzona Facts

The repair took two days and the personnel at the Hydroelectric Plant gained knowledge of Belzona products and procedures.

---

For more examples of Belzona Know - How In Action, please visit <https://khia.belzona.com>

ISO 9001:2015  
FS 695214  
ISO 14001:2015  
EMS 695213

Belzona products are  
manufactured under an ISO  
9000 Registered Quality  
Management System.

[www.belzona.com](http://www.belzona.com)

