

# FIRE TRUCK PUMP GETS NEW LIFE WITH BELZONA

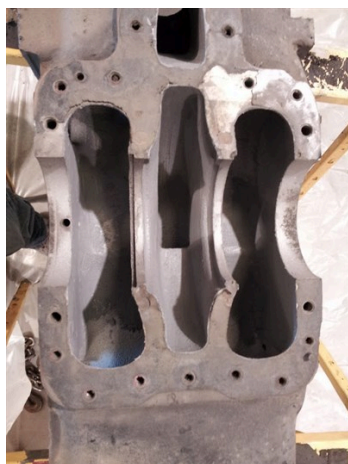
ID: 5660

Industry: *Transport*  
Application: *CEP-Centrifugal Pumps*  
Substrate: *Cast Iron*  
Products: *\* Belzona 1111 (Super Metal) ,*  
*\* Belzona 1341 (Supermetalglide) ,*

Customer Location: *Fire Department, Texas, USA*  
Application Date: *2013*

## Problem

*The pump had suffered severe corrosion due to intermittent use.*



## Photograph Descriptions

- \* View of the fire truck ,
- \* Blasted pump ,
- \* Coated pump ,
- \* Coated valve body ,

## Application Situation

Fire truck pump.

## Application Method

The application was carried out in accordance with Belzona Know-How System Leaflets CEP-1 and CEP-3. Pump was blasted and repaired with Belzona 1111 prior to being coated with Belzona 1341.

## Belzona Facts

For more examples of Belzona Know - How In Action, please visit <https://khia.belzona.com>

ISO 9001:2015  
FS 695214  
ISO 14001:2015  
EMS 695213

Belzona products are  
manufactured under an ISO  
9000 Registered Quality  
Management System.

[www.belzona.com](http://www.belzona.com)

  
**BELZONA**  
Repair • Protect • Improve

The cost of the coating was less than half of the cost of a new pump and the repair was completed in two days. Replacement with a new pump would have taken 4 weeks, which would have eliminated the use of the Fire truck. Additionally, the coated pump was more efficient than a new pump.

---

For more examples of Belzona Know - How In Action, please visit <https://khia.belzona.com>

ISO 9001:2015  
FS 695214  
ISO 14001:2015  
EMS 695213

Belzona products are  
manufactured under an ISO  
9000 Registered Quality  
Management System.

[www.belzona.com](http://www.belzona.com)

