

# BELZONA REPAIRS STAINLESS STEEL ARROW IN GRANITE

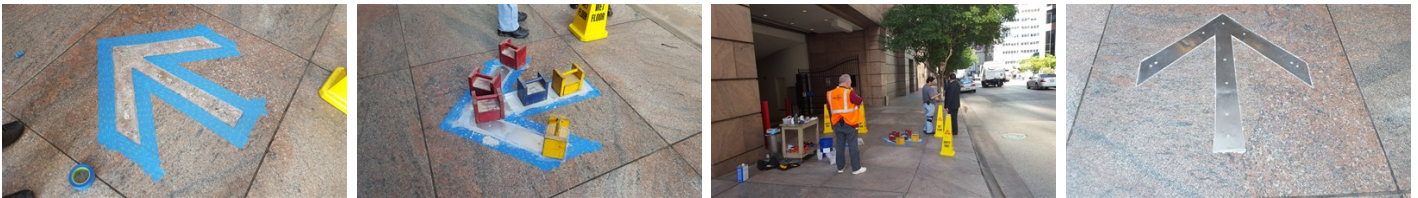
ID: 5798

Industry: Buildings & Structures  
Application: FPA-Floor Problem Areas  
Substrate: Granite  
Products: \* Belzona 4111 (Magma-Quartz) ,

Customer Location: Dallas, TX, USA  
Application Date: August 2015

## Problem

Two stainless steel arrows direct traffic into and out of the building. These arrows suffer from the force of tires as the cars accelerate up the slight ramp. The granite was rough hewn in the arrow inset as well as the driving and walking surfaces, which dislodged the arrow from the granite inset. This made cleaning and roughing of the granite difficult. Grit blasting was not possible and grinding was deemed to only affect the "top of the peaks". An alternate was needed since various methods had been tried to no avail. Only a 4 hour window was allowed for the application before cars ran on it. The surface temperature started out at 86°F at 7 AM and rose as noon approached.



## Photograph Descriptions

- \* Surface prepared and masked off. ,
- \* Belzona 4111 applied and weighed down to cure. ,
- \* Waiting on material to cure. Only a 4 hour window. ,
- \* Finished successful application. ,

## Application Situation

Arrow on floor

## Application Method

The day before the application the back of the arrow was roughened using a diamond 4" disc grinder producing a very rough crosshatched surface. The granite was cleaned of old bonding material using a twisted wire brush. This left a thin layer of metal on the surface of the granite that would not wipe off. Klenztone #1 was used carefully only to the inside of the inset in the granite using a brush and a back and forth motion. This loosened the smeared metal. After sitting 20 minutes the Klenztone was removed with a bucket of water. The next day the granite was dry and any oil on the prepared arrow and granite was removed. The resins were mixed and a light coating of resins was applied to the back side of the arrow and the granite inset to ensure total contact of Belzona 4111. Aggregate was added to the mixed resin to produce a thick gravy type mix. This was applied to the bottom of the granite inset and the back of the arrow.

For more examples of Belzona Know - How In Action, please visit <https://khia.belzona.com>

ISO 9001:2015  
FS 695214  
ISO 14001:2015  
EMS 695213

Belzona products are  
manufactured under an ISO  
9000 Registered Quality  
Management System.

[www.belzona.com](http://www.belzona.com)

**BELZONA**  
Repair • Protect • Improve

## Belzona Facts

Belzona 4111 was used due to the specifications presented and the reputation of Belzona. The assistance offered by the consultant was helpful. All other methods of repair had failed.

---

For more examples of Belzona Know - How In Action, please visit <https://khia.belzona.com>

ISO 9001:2015  
FS 695214  
ISO 14001:2015  
EMS 695213

Belzona products are  
manufactured under an ISO  
9000 Registered Quality  
Management System.

[www.belzona.com](http://www.belzona.com)

