

MOORING WINCH BONDED TO DECK WITH BELZONA

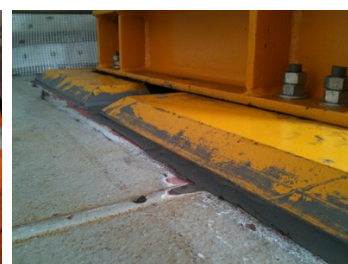
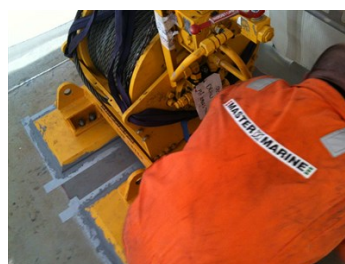
ID: 5974

Industry: Oil & Gas
Application: GSS-Gaskets, Seals and Shims
Substrate: Steel
Products: * Belzona 1111 (Super Metal) ,

Customer Location: Flotel, Arendal, Norway
Application Date: May, 2011

Problem

Due to issues with welding and passive fire protection installed on deck, an alternative solution was needed to bond a mooring winch to a deck structure.



Photograph Descriptions

- * View of the deck ,
- * Dry-fitting the winch ,
- * Bonding application using Belzona 1111 ,
- * Completed application ,

Application Situation

The application was executed onboard the Flotel jackup rig "Haven", located on the North Sea Ekofisk oil field.

Application Method

The application was carried out in accordance with a modified version of Belzona Know-How System Leaflet GSS-9. Four 450mm x 450mm doubler plates were bonded to the deck with Belzona 1111.

Belzona Facts

For more examples of Belzona Know - How In Action, please visit <https://khia.belzona.com>

ISO 9001:2015
FS 695214
ISO 14001:2015
EMS 695213

Belzona products are
manufactured under an ISO
9000 Registered Quality
Management System.

www.belzona.com


BELZONA[®]
Repair • Protect • Improve

After the application was finished, the winch was tested to 5 tonnes x 1,5 safety factor. The test of 7 tonnes was then executed in cycles. After confirming that the winch can hold 5 tonnes of sideways force for 2,5 hours, the winch assembly was accepted.

For more examples of Belzona Know - How In Action, please visit <https://khia.belzona.com>

ISO 9001:2015
FS 695214
ISO 14001:2015
EMS 695213

Belzona products are
manufactured under an ISO
9000 Registered Quality
Management System.

www.belzona.com



Copyright © Belzona International Limited 2025