

# BELZONA 7111 ACCURATELY LOCATES EXCAVATOR BEARING SEAT

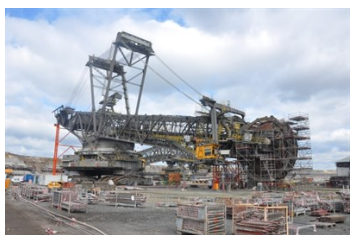
ID: 5976

Industry: Mining & Quarrying  
Application: GSS-Gaskets, Seals and Shims  
Substrate: Carbon Steel  
Products: \* Belzona 7111 ,

Customer Location: Mining Company, Germany  
Application Date: August 2015

## Problem

*The customer required a solution to accurately locate the bearing seat of a large Excavator. By using Belzona to create the shim, 100% support of the bearing was achieved and consequently stresses reduced.*



## Photograph Descriptions

- \* The Excavator ,
- \* Measuring substrate temperature ,
- \* Pouring Belzona 7111 ,
- \* View of the secured bearing seat ,

## Application Situation

Rotary turntable bearing of one of their bucket wheel excavators used in the open cast strip mine.

## Application Method

The application was carried out in accordance with Belzona Know-How System Leaflet GSS-12. 1750 Kg of Belzona 7111 was poured to accurately locate the bearing seat.

## Belzona Facts

Trials were carried out for the client to optimise the application procedure. The use of Belzona 7111 allowed for ease of access and reduced labour costs for the customer. By using Belzona to create the shim, 100% support of the bearing was achieved and consequently stresses were reduced.

For more examples of Belzona Know - How In Action, please visit <https://khia.belzona.com>

ISO 9001:2015  
FS 695214  
ISO 14001:2015  
EMS 695213

Belzona products are  
manufactured under an ISO  
9000 Registered Quality  
Management System.

[www.belzona.com](http://www.belzona.com)

  
**BELZONA®**  
Repair • Protect • Improve